

**NEKO**  
THINK DESIGN

NEKO LIGHTING AG

Kreuzstrasse 2  
CH-8008 Zürich / Switzerland  
+41 44 451 80 15  
sales@nekolighting.com  
www.nekolighting.com



Hospitality & Residential

**NEKO**  
THINK DESIGN



THINK DESIGN

## About Us

Founded in 2013 by Mr. Sven Speissegger, NEKO set out with a clear vision: to deliver high-quality, efficient LED lighting solutions with an exceptional price-to-performance ratio.

Under Mr. Speissegger's leadership, NEKO has rapidly evolved into a thriving international lighting company, now serving customers in over 120 countries with innovative architectural solutions for both indoor and outdoor applications.

Over the past decade, NEKO has grown into a global team of more than 450 professionals, with its own production facility in Asia and dedicated Design, Sales, and Marketing departments in Europe.

Mr. Speissegger's commitment to innovation and quality continues to drive NEKO's success and industry leadership.

# Guidelines for Hospitality & Residential Brochure (Digital Version)

Click on any image or title to view more details.

**MINUX 38**  
A sleek, minimalist design with high beam output, ideal for ambient lighting and a warm, intimate atmosphere. Available in multiple color temperatures and beam angles, providing flexibility in design. Suitable for use in dining rooms, bars, and lounge areas.

**SENSE 55 R1**  
A modern, adjustable spotlight fixture. A wide range of beam angles and color temperatures. Ideal for highlighting artwork, architecture, or creating a warm, intimate atmosphere. Available in multiple color temperatures and beam angles, providing flexibility in design. Suitable for use in dining rooms, bars, and lounge areas.

**SENSE 75 R1**  
A modern, adjustable spotlight fixture. A wide range of beam angles and color temperatures. Ideal for highlighting artwork, architecture, or creating a warm, intimate atmosphere. Available in multiple color temperatures and beam angles, providing flexibility in design. Suitable for use in dining rooms, bars, and lounge areas.

**Lobbies & Receptions**

The lobby and reception area serves as the first touchpoint in any hospitality space, where lighting plays a crucial role in shaping the guest experience. The design should create a welcoming and sophisticated atmosphere, balancing ambient illumination with strategic accents to highlight architectural details, artwork, or key focal points. Lighting must also guide movement intuitively, ensuring both functionality and visual comfort.

A successful lighting scheme in the lobby relies on fixtures that integrate seamlessly into the architecture, maintaining a clean and unobtrusive aesthetic. The goal is to create warmth and elegance while setting the tone for the rest of the guest journey. By combining subtle layers of light, the design can enhance textures, create depth, and leave a lasting impression of refinement and attention to detail.

**RECOMMENDATIONS**



**RECOMMENDATIONS**

In a home setting, the **FURBIN** downlights provide essential general light that ensures even brightness throughout. The focused beam design integrates beautifully with the ceiling architecture, enhancing the visual harmony of the space. Their soft, consistent illumination creates a warm, inviting atmosphere, perfect for making a sophisticated first impression on guests.

## Hospitality

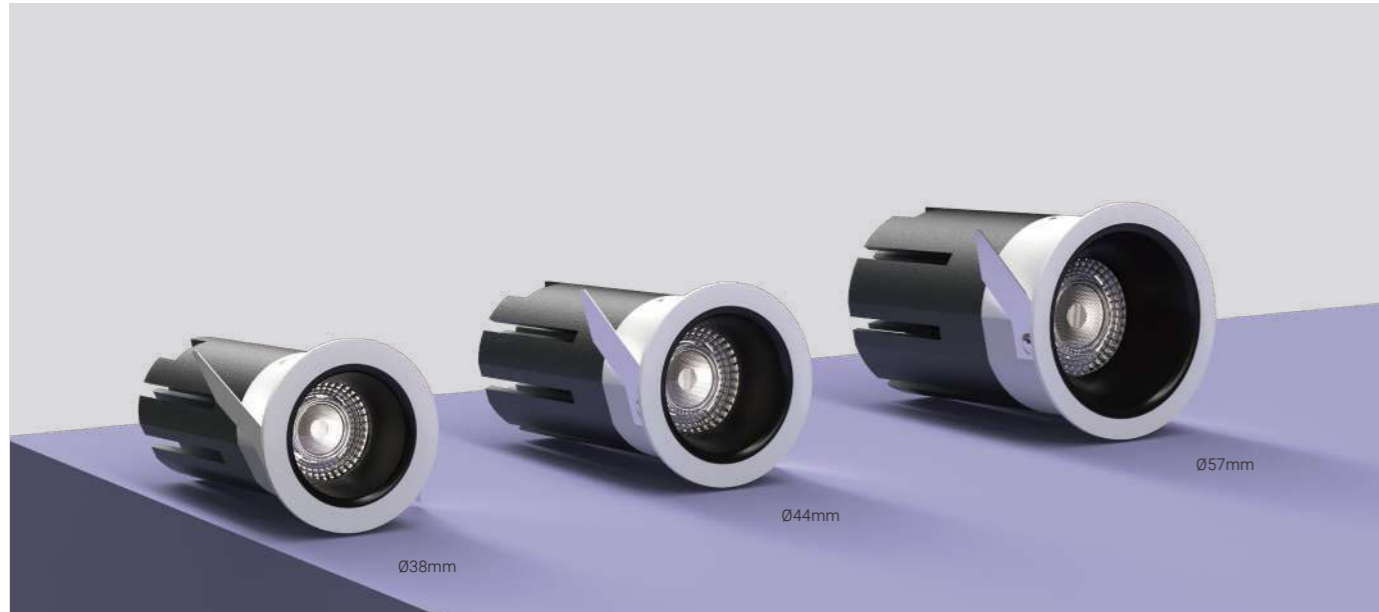
- 17 Lobbies & Receptions
- 27 Restaurants & Bars
- 37 Coffee Shops
- 47 Guest Rooms
- 55 Corridors & Walkways
- 67 Fitness, Spa & Wellness Centers
- 79 Conference & Meeting Rooms
- 85 Children's Areas

## Residential

- 95 Living Rooms
- 103 Bedrooms
- 115 Home Offices & Studies
- 125 Bathrooms
- 131 Dining Rooms & Kitchens
- 143 Circulation Areas

## Outdoor

- 153 Entrances & Pathways
- 165 Gardens & Landscapes

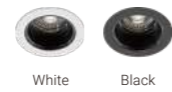


### MINUX 38

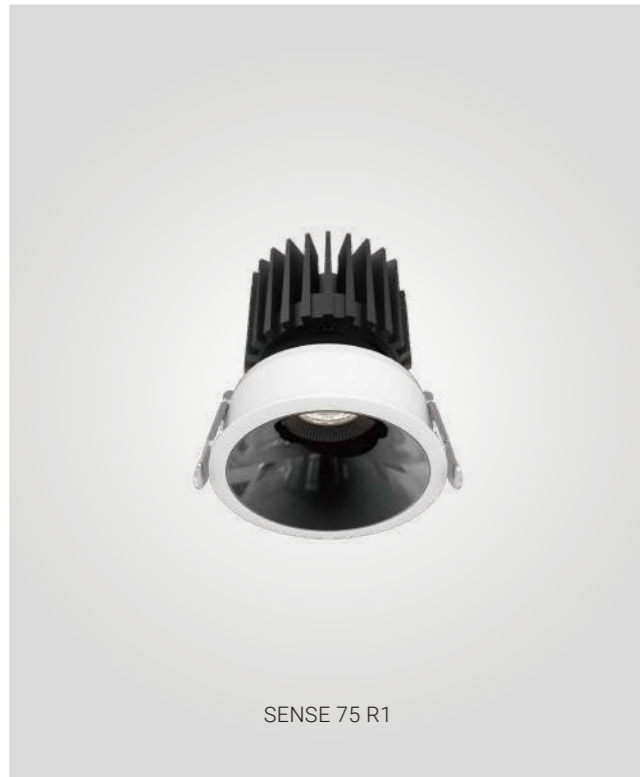
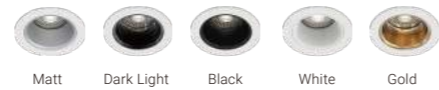
Minimalist LED Downlight

This downlight features a sleek, minimalist design with a high lumen output, ideal for a **Ø38mm** ceiling cutout and a narrow trim. Available with multiple reflector color options to suit various aesthetic preferences, it provides up to 600lm of light with a CRI of **>90**. With an **IP65** rating, it is suitable for use in damp locations such as spa space and bathrooms.

#### Trim Finishes



#### Reflector Options



### SENSE 75 R1

75mm modular design architectural downlight

An all-rounder adjustable downlight, offering precise cut-off lighting and homogeneous illumination. Designed for a **Ø75mm** ceiling cutout with a narrow trim, it provides up to **1200lm** of light with a CRI of **>90**. With excellent glare control and a glare cut-off angle of **35°**, light output is maximized even when tilted up to **30°**. The downlight also supports two optical accessories simultaneously, catering to specialized lighting needs.

#### Trim Finishes



#### Reflector Options

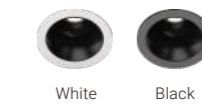


### SENSE 55 R1

55mm modular design architectural downlight

A small yet powerful adjustable downlight that delivers precise cut-off lighting performance. Its exceptional cut-off capability enhances architectural lines on walls, adding an elegant touch. Designed for a **Ø55mm** ceiling cutout with a narrow trim, it offers up to **630lm** of light with a CRI of **>90**. With excellent glare control and a glare cut-off angle of **45°**, it provides optimal lighting comfort.

#### Trim Finishes



#### Reflector Options



### SENSE Wall Washer

New Wall Washer Downlight

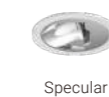
A high-efficiency wall washer downlight that creates uniform illumination across the wall from top to bottom. Featuring advanced wall washer optic design technology, it offers excellent glare control, ensuring no direct light enters the eyes for enhanced visual comfort.



#### Trim Finishes



#### Reflector Options





### CLUB TA5+M3

Modular LED Downlight

A classic modular design adjustable downlight that allows for fast installation and easy maintenance. With a **Ø75mm** cutout, it delivers up to **1100lm** of light with a CRI of **>90**. Available in multiple reflector colors to meet various aesthetic needs. The total height of the luminaire is **76mm**, making it ideal for spaces with limited ceiling plenum height. The light module is **IP54** rated, making it suitable for damp locations such as spa space and bathrooms.

More unique configuration available in product series.



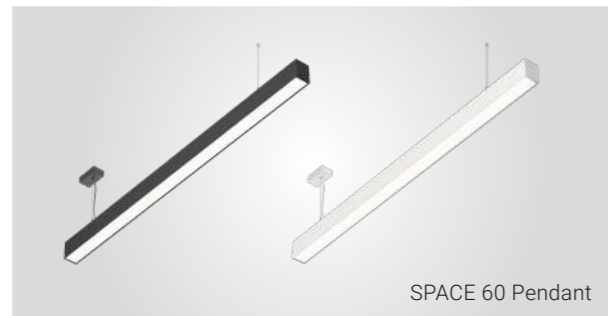
TA5+M3

### SPACE 60 Pendant

Linear Light Pendant with Up-and-Down Lighting

The **SPACE 60** is an ideal linear profile system for public spaces, offering strict glare control (**UGR<19**) and homogeneous lighting for optimal visual comfort. It ensures clean, efficient light performance with no light leakage. Equipped with quick-connectors, all profiles allow for fast and easy installation and maintenance, with a sleek design that features no visible screws.

The system can be connected into various shapes to best suit your design, and the pendant version provides both up-and-down lighting.



SPACE 60 Pendant



### FUSION FF2

2-cell Fixed Linear LED Downlight

A sleek, narrow line of nano LED downlights designed for pure minimalism, creating a linear light with two LED spots. It offers superior glare control for optimal performance and visual comfort. With a **4W** power consumption, it delivers up to **420lm** system luminous flux, and provides four beam angle options, ranging from narrow to wide flood. More spot quantity product available in product series.

#### Finishes



White

Black

#### Reflector Options



Black



FUSION FF2



FUSION FF5

### FUSION FF5

5-cell Fixed Linear LED Downlight

A narrow line of nano LED downlights designed for pure minimalism, delivering a linear light from five LED spots. It offers superior glare control for high performance and visual comfort. With **11W** power consumption, it provides up to **950lm** system luminous flux and offers four beam angle options, ranging from narrow to wide flood. More spot quantity product available in product series.

#### Finishes



White

Black

#### Reflector Options



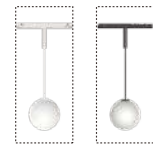
Black

### MODULINE 26 ML26 Decorative Ball

Pendant Decorative Ball Light Inset

A modern pendant ball-shaped light that offers ambient and homogeneous lighting for enhanced visual comfort. The length of the pendant cable is adjustable on-site to suit your space requirements.

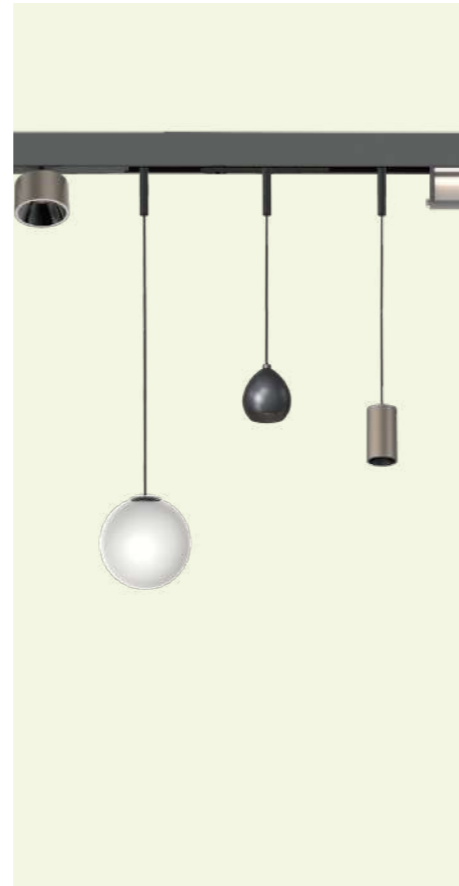
#### Finishes



White Black



MODULINE 26  
ML26 Decorative Ball

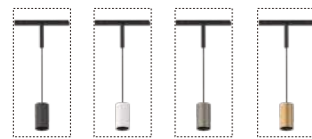


### MODULINE 26 ML26 Pendant Spot

Pendant Spot Light Inset

An architectural pendant cylinder light with an elegant design, providing visual comfort lighting. The length of the pendant cable is cuttable on-site to meet your specific needs.

#### Finishes



Black(B) White(W) Brushed Bronze(Z) Brushed Gold(G)



MODULINE 26  
ML26 Pendant Spot



MODULINE 26  
ML26 Spotlight

### MODULINE 26 ML26 Spotlight

Spotlight Inset

A small yet powerful single spot spotlight inset, featuring a **Ø40mm** spot and delivering up to **780lm** with a CRI of **>90**. It is **355°** rotatable and **90°** tiltable, offering versatile lighting options. The spotlight light inset is also available in a double spot configuration for expanded coverage.

#### Finishes



Black(B) White(W) Brushed Bronze(Z) Brushed Gold(G)



MODULINE 26  
ML26 Accent Light

### MODULINE 26 ML26 Accent Light

Accent Light Inset

A linear accent light inset offering beam angles of **20°**, **35°**, and **55°** to suit various lighting needs. It delivers up to **1300lm** of light with a CRI of **>90**, all within a compact **280mm** length.

#### Finishes



White Black



MODULINE 26  
ML26 General Light

### MODULINE 26 ML26 General Light

General Light Inset

A linear general light inset providing ambient and homogeneous lighting for optimal visual comfort. It delivers up to **900lm** with a CRI of **>90**, all within a **560mm** length.

#### Finishes



White Black



## Sugar 450 Rod Pendant

Rod Pendant Ceiling Light

A high-efficiency modern rod pendant ceiling light with a decorative recessed frame design, measuring **Ø450mm**. It features a top-level micro-prismatic cover for enhanced visual comfort (**UGR<19**) and delivers homogeneous lighting. Available in both surface-mounted and wire pendant options, with an optional indirect light module. Other diameters are also available: **Ø350mm, Ø600mm, and Ø900mm**.

### Finishes



Black-Black (BB) Black-Gold (BG) White-White (WW)



SUGAR 450 Rod Pendant



MIU ART

## MIU ART

LED ceiling light

MIU ART crafted from aluminum, offers superior heat dissipation. Featuring convex lens optics, it provides excellent glare control and a clear, focused light. With a **UGR<19**, it ensures optimal visual comfort. The 'Driver on Board' design ensures easy installation and maintenance.

Available in two sizes, this stunning luminaire is ideal for residential settings. It comes with standard phase dimming for adjustable brightness and is available in custom colors to suit any interior.

### Standard Finishes



White Black

### Optional Finishes



Gold Brown Chrome



MIU-P L

## MIU-P S

Field-Cuttable Pendant Light

The **MIU** architectural pendant cylinder light makes a bold yet minimalist statement in any room with its striking cylindrical design. Featuring an elegant look with no visible screws, the length of the pendant cable is cuttable onsite. It offers a **11W** power consumption with beam angles of **18°, 36°, and 50°** to suit various lighting needs.

### Finishes



White Black

### Reflector Options



Black White Gold



MIU-P S



PURE Art

## PURE Art

LED Tracklight

A sleek and compact adjustable spotlight within the track system, featuring an integrated LED driver. With beam angles of **18°, 24°, 36°, and 50°**, it delivers up to **1250lm** of light. PURE Art provides a professional solution for sales presentations, offering excellent color reproduction that enhances the vibrancy of displayed products. The die-cast aluminum housing, available in black or white, integrates the LED driver, while a black anti-glare ring optimizes visual comfort.

### Finishes



White Black



CARMEL

## Ceiling Lights

Outdoor ceiling lights are essential for creating well-lit, inviting spaces in patios, balconies, and terraces. They offer overhead illumination that enhances the ambiance of any outdoor gathering area. Whether you're looking to brighten up a covered patio or highlight architectural details, ceiling lights provide both functional and decorative lighting solutions. NEKO's outdoor lighting collection features a variety of ceiling lights, including recessed downlights, well-diffused ceiling lights, and aesthetically pleasing cylindrical designs. With different styles and light distribution options, these lights ensure a harmonious blend of form and function for any outdoor environment.

### Other Products Available



BAY

## Wall Lights

Wall lights are essential for outdoor lighting, offering both decorative and functional benefits. They enhance the aesthetic of outdoor spaces, providing soft, ambient lighting for walls, pathways, and entryways. Perfect for creating inviting atmospheres or accentuating architectural features, wall lights add style and security to gardens, patios, and building exteriors. NEKO's outdoor wall lights come in a variety of shapes and beam options, designed to suit diverse applications.

### Other Products Available



POSITANO 600

## Bollard Lights

Bollard lights are a perfect choice for outdoor spaces, combining practicality with aesthetic appeal. These fixtures offer effective illumination for pathways, gardens, and landscapes, while also enhancing safety and guiding movement. Their design often features soft, directional lighting that highlights outdoor elements and creates a welcoming atmosphere.

NEKO's bollard lights come in a range of styles and lighting options, from sleek modern designs to more traditional looks. With different beam angles and finishes, these lights not only illuminate but also decorate your garden, adding elegance and charm to outdoor spaces, making them stand out beautifully at night.

### Other Products Available



NEPTUNE SU CV

## Projector Lights

Projector lights are ideal for outdoor spaces, perfect for highlighting landscapes, gardens, trees, and building facades. Their sharp, vibrant beams create stunning effects, transforming any environment with ease. NEKO offers a diverse selection of projector lights, each designed to suit various outdoor applications. With options ranging from sleek to rugged designs, our lights provide flexibility in installation. Some series feature optional accessories, allowing customization to meet specific mounting conditions. Whether enhancing a garden or spotlighting architectural features, NEKO's projector lights bring precision and style to any outdoor setting.

### Optional Accessories



Honeycomb Bevel Snoot Straight Shoot

### Other Products Available



# Lighting Design Service

## PHASE 1

### Site Assessments

1. On-site research
2. Gathering customer needs and intentions
3. Identifying potential risks to ensure a successful lighting design



## PHASE 2

### Lighting Concept Design

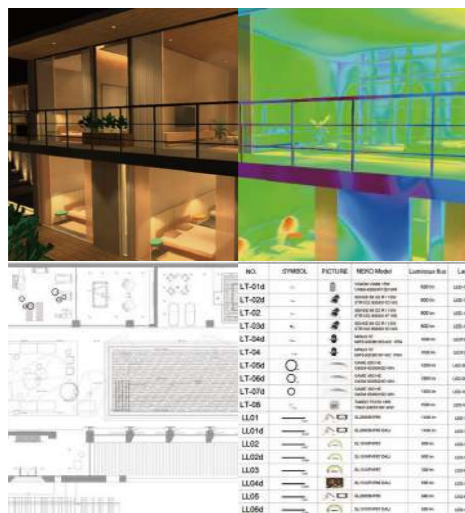
1. Development of a preliminary lighting concept
2. Selection plan for fixtures that align with the project's vision



## PHASE 3

### Detailed Lighting Design

1. Comprehensive lighting analysis
2. Lux calculations to ensure optimal illumination across all spaces



## PHASE 4

### Site Commissioning

On-site supervision of the final setup and light effects ensuring the lighting meets the desired standards.



# NEKO Color Options & Customization

Discover a range of color solutions to perfectly match your design vision.

## Classic



**RAL 9016 Equivalent - NEKO Standard White**  
Delivery time standard lead time



**RAL 9005 - Jet Black**  
Delivery time standard lead time

## Collection



**RAL 1013 - Oyster White**  
Delivery time standard lead time + 4 weeks  
Additional cost \$300 per size per series



**RAL 7044 - Silk Grey**  
Delivery time standard lead time + 4 weeks  
Additional cost \$300 per size per series



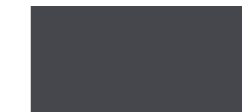
**RAL 7040 - Window Grey**  
Delivery time standard lead time + 4 weeks  
Additional cost \$300 per size per series



**RAL 1035 - Pearl Beige**  
Delivery time standard lead time + 4 weeks  
Additional cost \$300 per size per series



**RAL 8028 - Terra Brown**  
Delivery time standard lead time + 4 weeks  
Additional cost \$300 per size per series



**RAL 7024 - Graphite Grey**  
Delivery time standard lead time + 4 weeks  
Additional cost \$300 per size per series



**RAL 1002 - Sand Yellow**  
Delivery time standard lead time + 4 weeks  
Additional cost \$300 per size per series



**RAL 1004 - Golden Yellow**  
Delivery time standard lead time + 4 weeks  
Additional cost \$300 per size per series



**RAL 6027 - Light Green**  
Delivery time standard lead time + 4 weeks  
Additional cost \$300 per size per series



**RAL 6019 - Pastel Green**  
Delivery time standard lead time + 4 weeks  
Additional cost \$300 per size per series



**RAL 5014 - Pigeon Blue**  
Delivery time standard lead time + 4 weeks  
Additional cost \$300 per size per series



**RAL 4011 - Pearl Violet**  
Delivery time standard lead time + 4 weeks  
Additional cost \$300 per size per series



**RAL 3014 - Antique Pink**  
Delivery time standard lead time + 4 weeks  
Additional cost \$300 per size per series

## Luxury

Applicable only to the RS25, RS40, FRS72, and PS55 models under the Moduline 26 series.



**Brushed Gold**  
Delivery time standard lead time  
Additional cost 30%



**Brushed Silver Bronze (Z)**  
Delivery time standard lead time  
Additional cost 30%

# Hospitality





# Lobbies & Receptions



# Lobbies & Receptions

The lobby and reception area serves as the first touchpoint in any hospitality space, where lighting plays a crucial role in shaping the guest experience. The design should create a welcoming and sophisticated atmosphere, balancing ambient illumination with strategic accents to highlight architectural details, artwork, or key focal points. Lighting must also guide movement intuitively, ensuring both functionality and visual comfort.

A successful lighting scheme in this space relies on fixtures that integrate seamlessly into the architecture, maintaining a clean and unobtrusive aesthetic. The goal is to evoke warmth and elegance while setting the tone for the rest of the guest journey. By combining subtle layers of light, the design can enhance textures, create depth, and leave a lasting impression of refinement and attention to detail.

## RECOMMENDATIONS



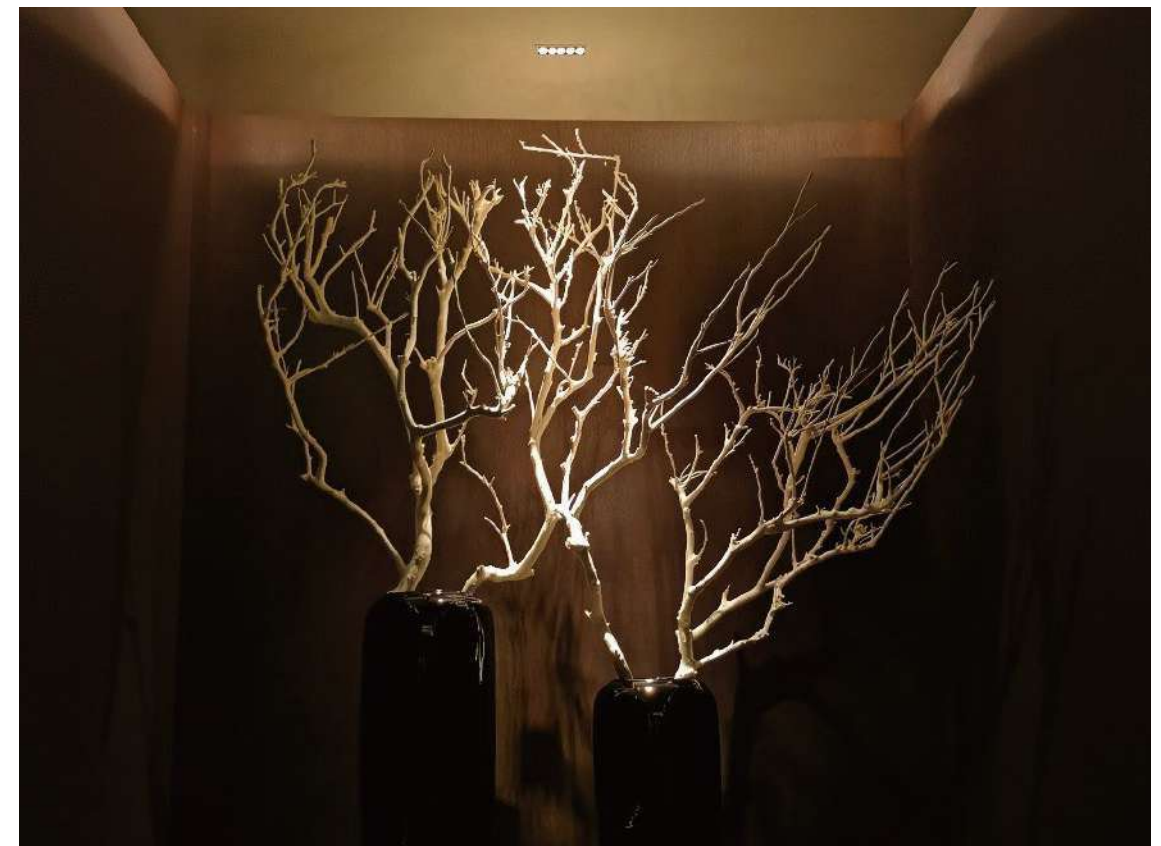


Project: Bvlgari Hotel, Shanghai, China



FUSION FF10

In a hotel lobby, the **FUSION** downlights provide essential general light that ensures even brightness throughout. The fixtures' linear design integrates beautifully with the ceiling architecture, enhancing the visual harmony of the space. Their soft, consistent illumination creates a warm, inviting atmosphere, perfect for making a sophisticated first impression on guests.





Project: Hotel Victoria Basel, Switzerland

The front desk is the first impression for guests, and the right lighting is essential. The **CLUB** downlights provide a bright yet warm illumination, enhancing the atmosphere of the space. With their clean, modern design, these fixtures integrate smoothly with the ceiling layout, offering a seamless visual experience that supports the overall welcoming ambiance of the hotel.



**CLUB** M3+TA5



Project: InterContinental Hotels & Resorts, Hefei, China



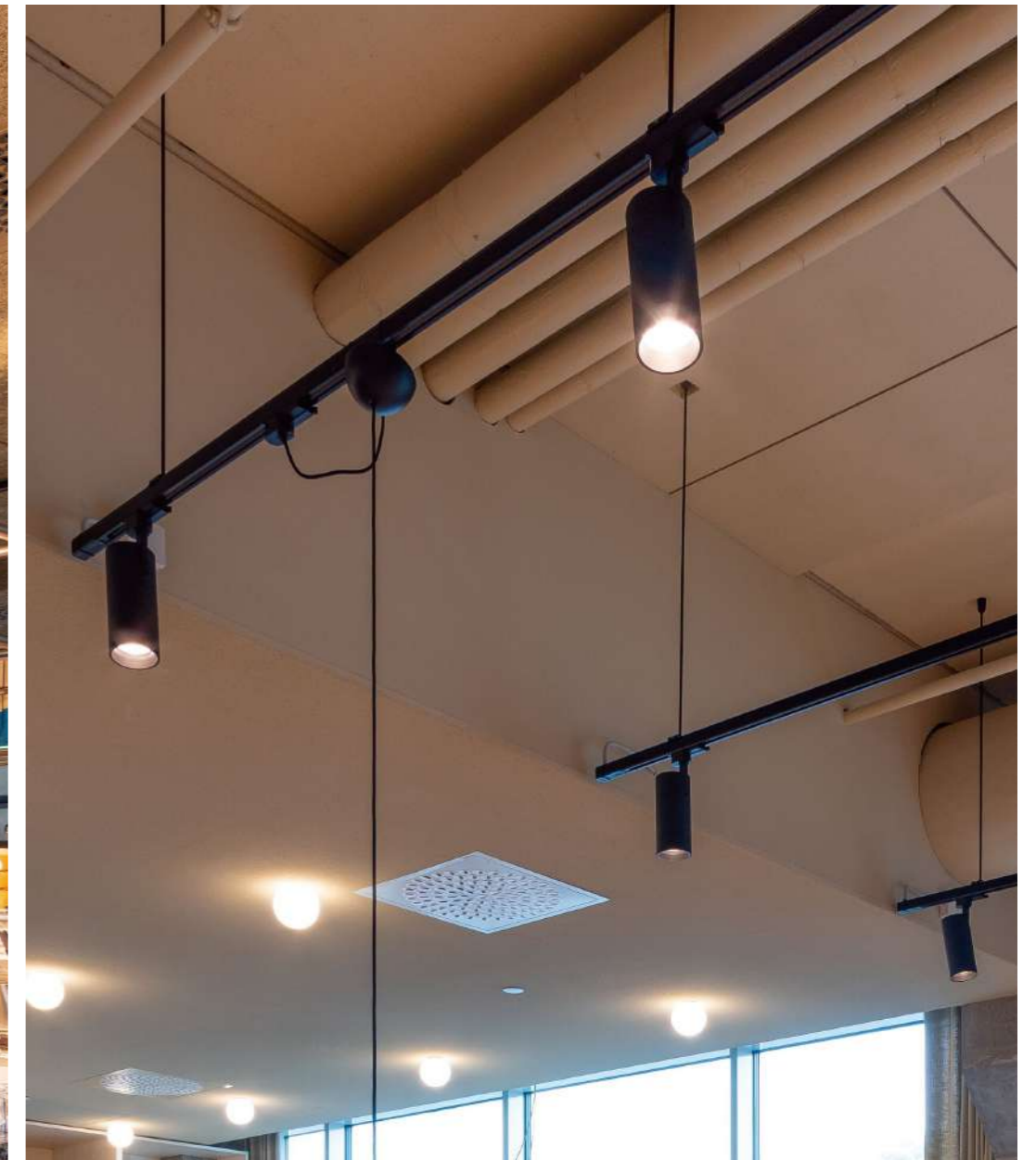
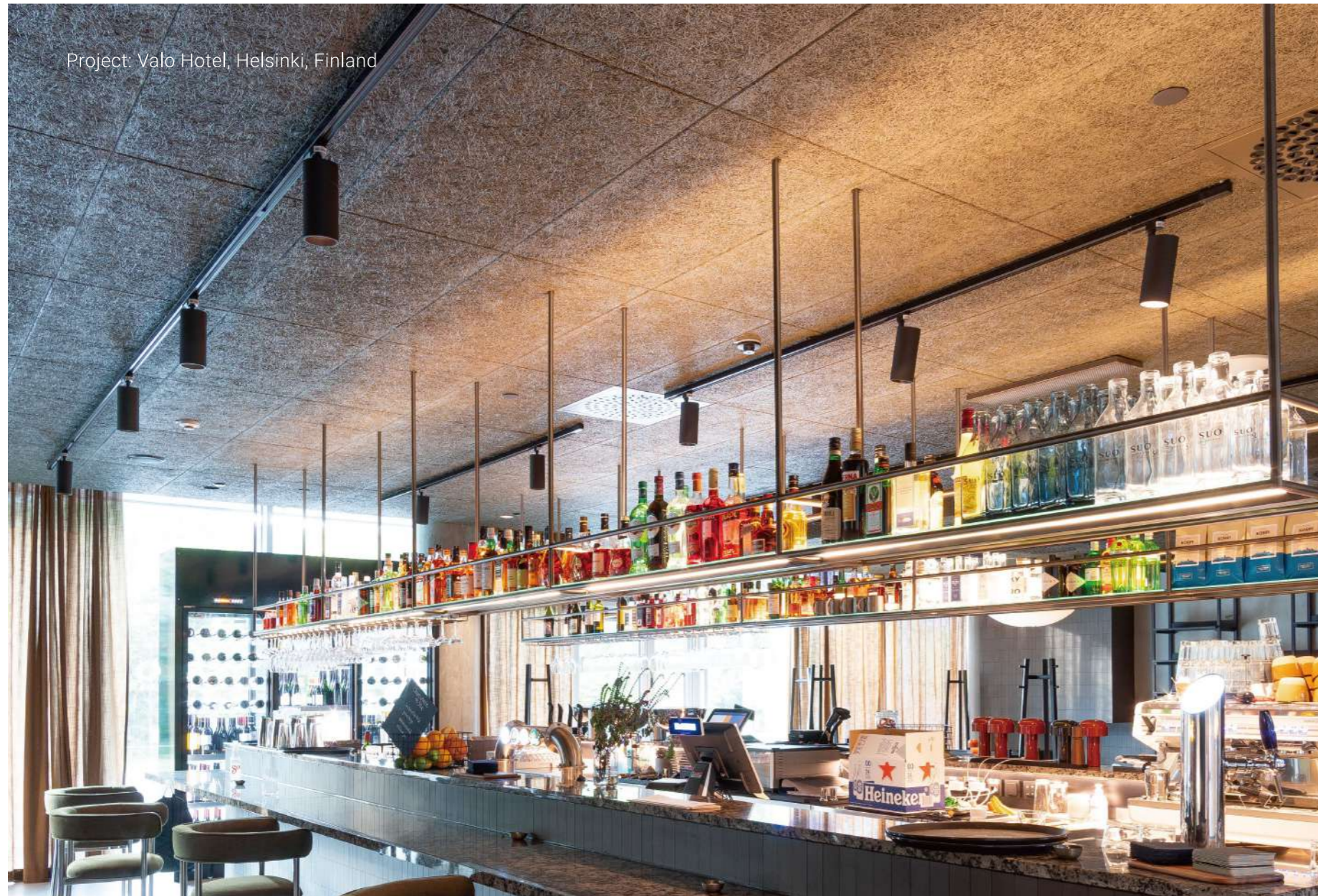
SENSE S100HR1

In the grand space of a hotel lobby, every detail counts. The **SENSE 100** downlight typically offers efficient lighting up to 18W, but with the **SENSE 100H**, the power increases to 25W while maintaining the same compact cutout. This is made possible by an additional 26mm in the heatsink height, allowing the fixture to deliver more power without enlarging its overall dimensions. With their low-glare technology, the **SENSE 100H** downlights create a comfortable environment for guests, subtly highlighting the design elements of the space. Their seamless integration into the ceiling layout ensures they complement the architectural vision, accentuating the lobby's most striking features.



# Restaurants & Bars





# Restaurants & Bars

In fine dining and upscale bar spaces, lighting sets the mood for an unforgettable experience. The interplay between warm, ambient light and accent lighting can highlight sophisticated textures, rich materials, and detailed craftsmanship, elevating the dining atmosphere.

Soft, low-intensity lighting can create intimacy, while focused beams accentuate the beauty of curated décor and art. A dynamic lighting design can balance functionality with aesthetics, ensuring that every corner of the space is lit with purpose, enhancing both the overall ambiance and the guests' sense of occasion.

## RECOMMENDATIONS





Project: Hotel Agua Del Desierto, Calama, Chile

The food hall's inviting atmosphere is defined by the blend of **MIU** pendant lights and **MIU** ceiling lights. **MIU** pendant lights cast focused light over the dining areas, creating intimate moments at each table. Meanwhile, the **MIU** ceiling lights provide a soft, balanced general light that illuminates the entire space without overwhelming it. They create a harmonious space together which guests can relax, dine, and enjoy the surrounding vibe of the decor and plants.





Project: Eggen Restaurant, Norway

The wooden ceiling in this restaurant comes to life with the subtle brilliance of **FUSION** downlights. Designed to blend seamlessly into the structure, they provide a smooth, glare-free illumination that highlights the rich textures of the wood.

The result? A warm, bright atmosphere that feels both timeless and luxurious, perfectly suited for a sophisticated dining environment.



**FUSION** FF10

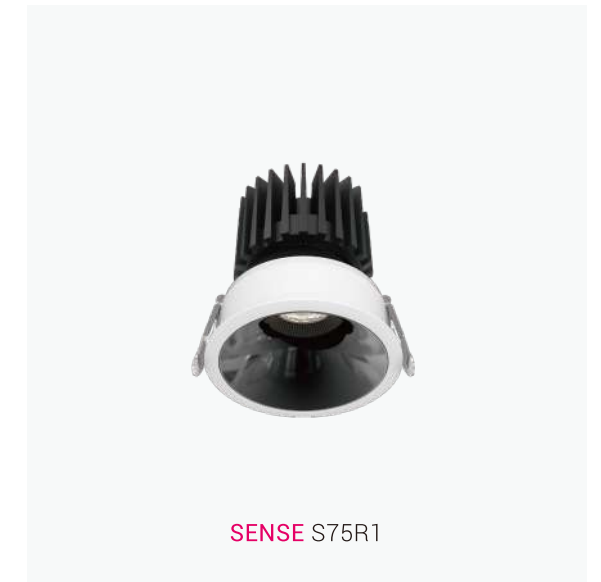


Project: Capri by Fraser China Square, Singapore

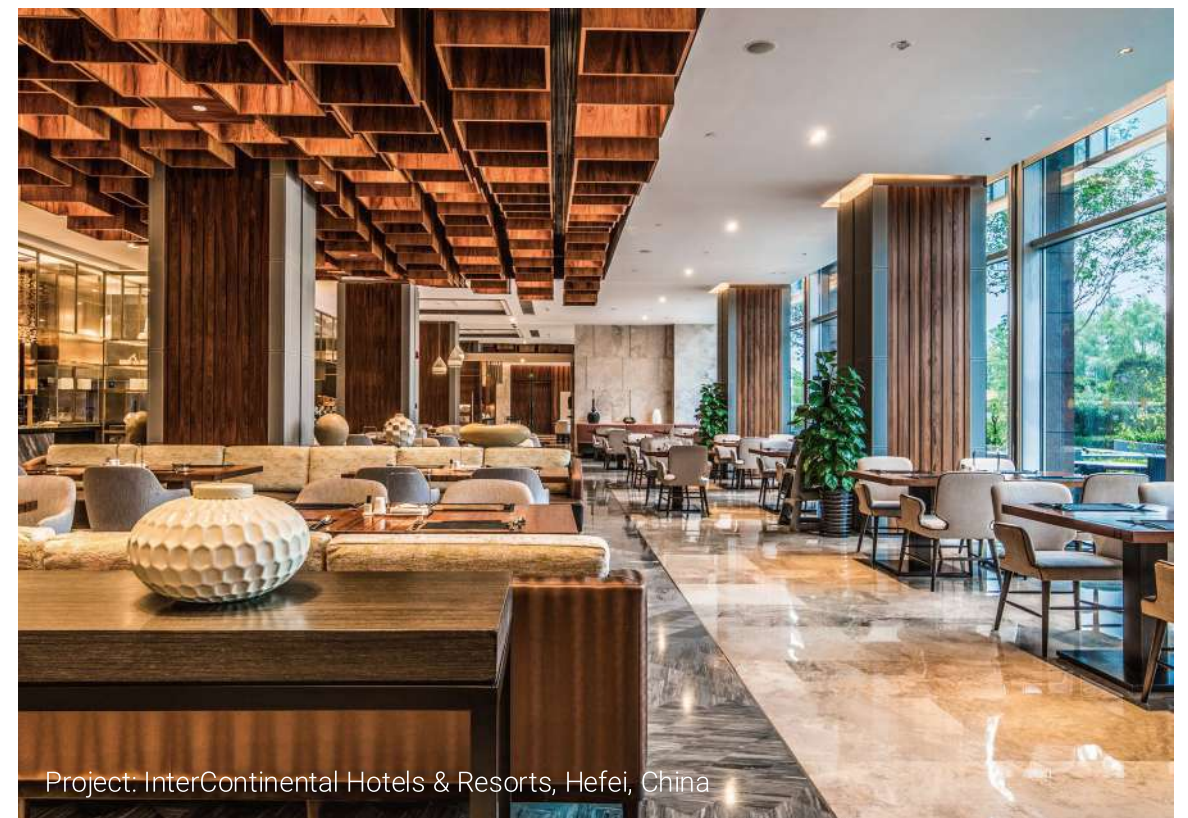
The **SENSE** downlight series provides refined, glare-free illumination for the lounge, offering both focused lighting for dining areas and gentle general lighting for walkways. The even light highlights key features while creating soft, decorative light spots on the walls, adding depth and warmth to the space. The choice of reflector color—gold or chrome black—ensures the lighting complements the interior design, adapting to the unique style of each lounge while maintaining a cohesive, elegant atmosphere.



SENSE S68R1



SENSE S75R1



Project: InterContinental Hotels & Resorts, Hefei, China

# Coffee Shops





Project: Outsite Porto Mouco, Portugal

# Coffee Shops

Lighting plays a subtle yet significant role in creating a welcoming and energizing atmosphere in a hotel's café area. The goal is to combine warmth with a touch of vibrancy, crafting a space that encourages relaxation while adding a sense of style. Pendant lights, under-cabinet illumination, and soft background lighting can highlight the elegance of the furniture and accentuate the natural textures in the space. Lighting that enhances the visual appeal of beverages and treats can elevate the sensory experience, inviting guests to linger and enjoy.

## RECOMMENDATIONS





Project: Outside Porto Mouco, Portugal

The **PURE** surface-mounted downlights in this coffee bar are designed to do more than just light the room—they shape its atmosphere.

With adjustable angles, they spotlight the dining area and accentuate the warm wood, cool stone, and rich leather details. The low-glare feature ensures that the lighting feels as inviting as the décor, while the sleek design integrates effortlessly into the ceiling. These downlights don't just illuminate—they elevate the space's overall vibe.

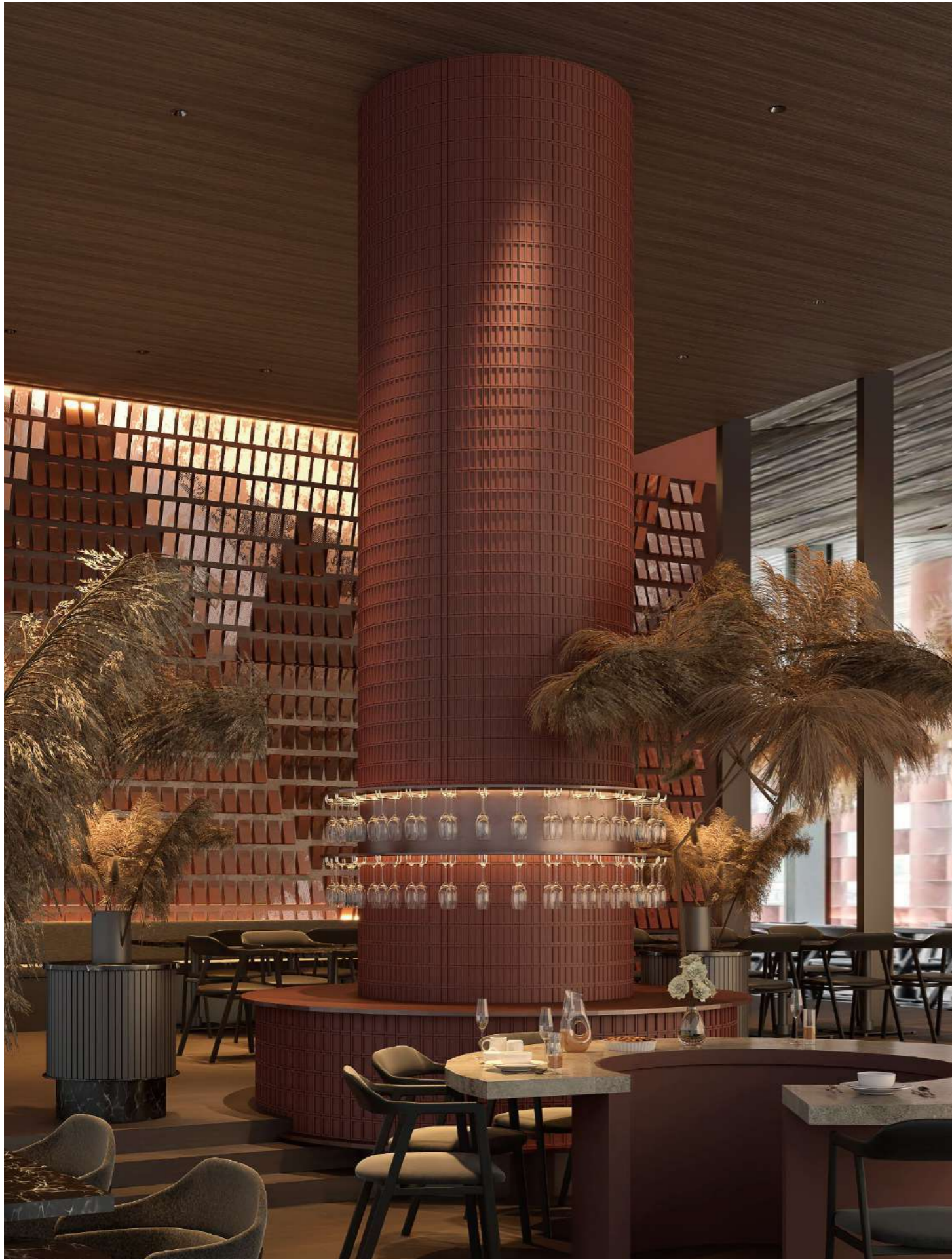


**PURE** Art-C



The **MIU** pendant light enhances the immersive atmosphere of the coffee bar by offering glare-free, precision lighting over the dining table. Beyond its function as a light source, it contributes to the overall design of the space, subtly decorating the surroundings with its decorative form. The light creates a warm, welcoming vibe, infusing the area with a sense of calm sophistication that perfectly matches the space's refined, modern style.





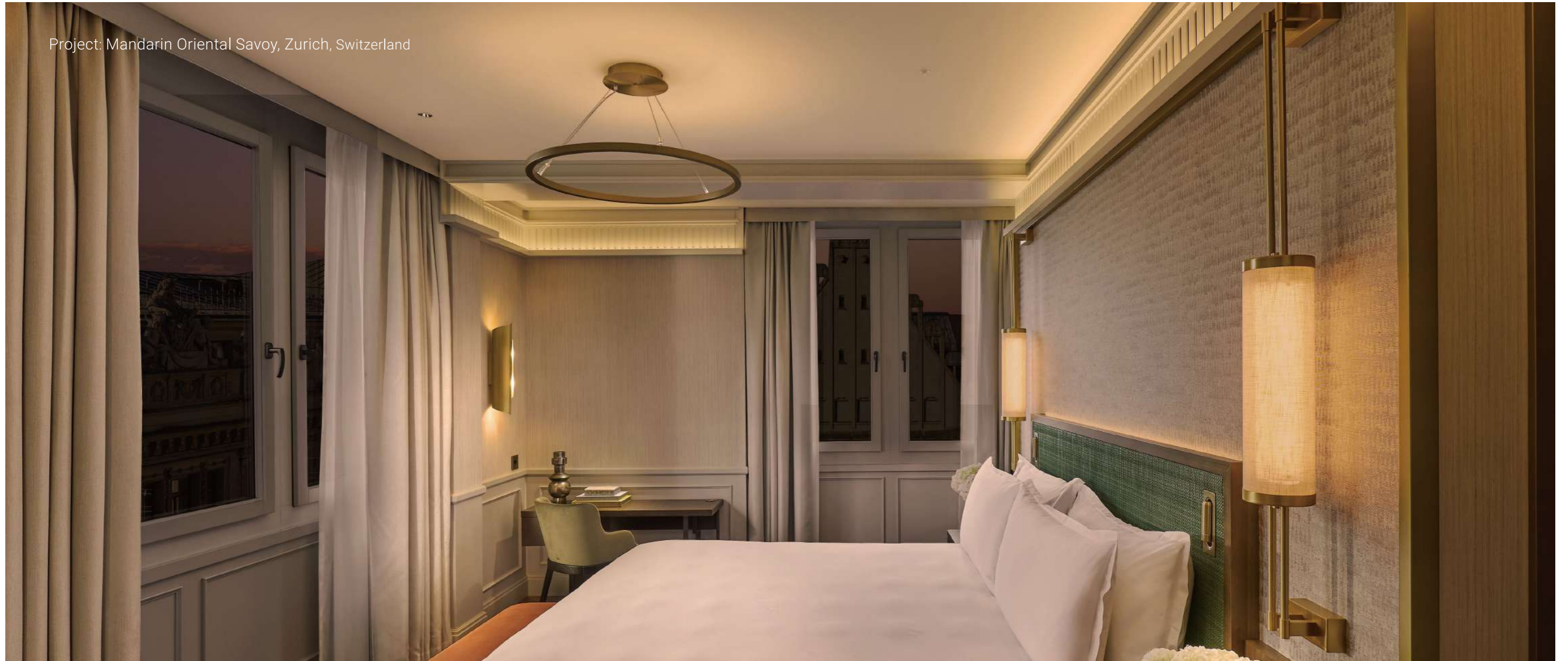
In this high-end coffee bar, the **SENSE** downlights bring an air of sophistication to the space by providing elegant, precise lighting. Installed into the high ceiling, they bath the room in soft, balanced light, enhancing the dark red accents and adding depth to the environment. The carefully directed light creates decorative highlights on columns, while maintaining a minimal, refined aesthetic that perfectly suits the space's elevated, atmospheric vibe.



# Guest Rooms



Project: Mandarin Oriental Savoy, Zurich, Switzerland



## Guest Rooms

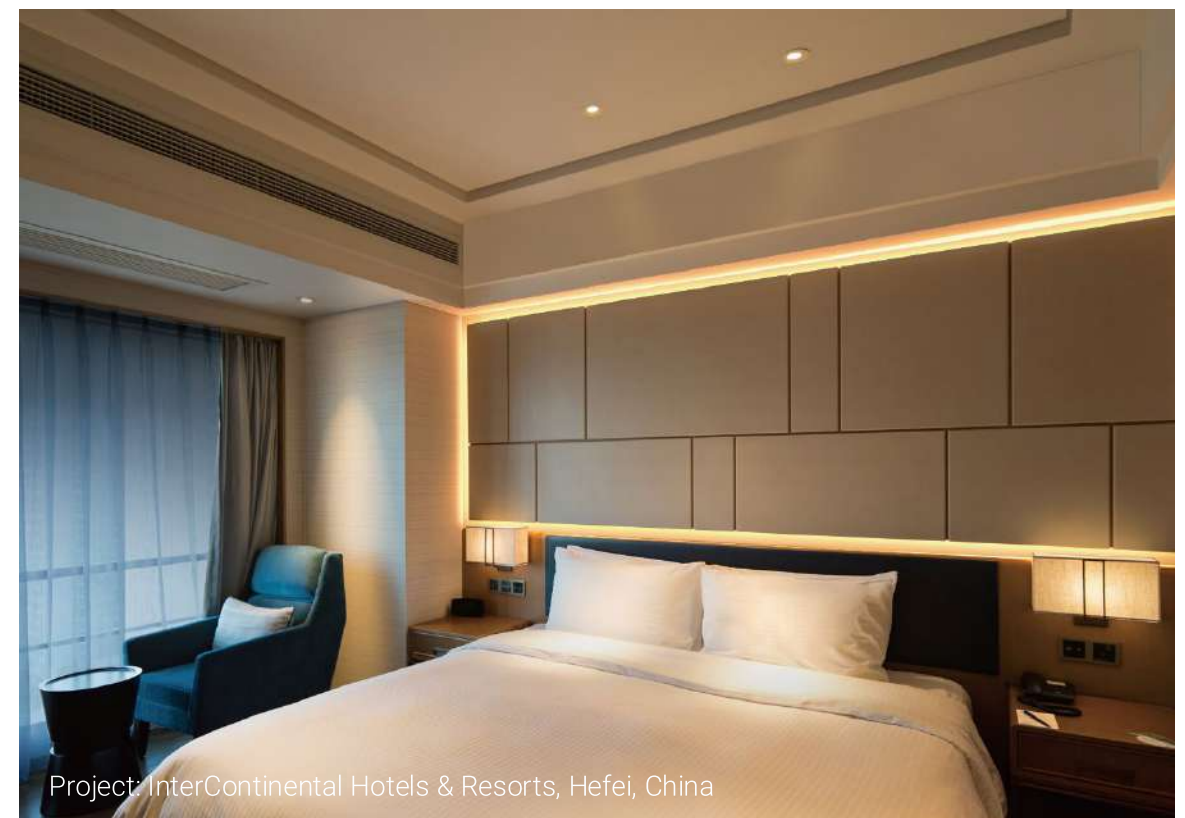
In luxury hotel rooms, lighting is essential in crafting a restful, yet stylish sanctuary. Ambient lighting should provide a soft, inviting glow, with task lighting for reading or working offering both practicality and comfort. The flexibility to control light intensity can allow guests to customize their room atmosphere, whether for relaxation or focus. Accent lighting can highlight design elements such as artworks, furniture, or architectural features, enhancing the room's elegance while maintaining an understated, tranquil environment.

### RECOMMENDATIONS





The **CLUB** downlights, featuring a special pinhole reflector design, provide precise, glare-free illumination in hotel guest rooms. These downlights, equipped with the M3 LED engine for super low height and high efficiency, ensure even, comfortable lighting over key areas like the bed and sofa lounge. Their minimalistic design keeps the light source unobtrusive, enhancing the room's luxurious dark wood elements while creating a cozy, layered lighting atmosphere. The unique reflectors, including the non-centered elliptical hole feature, are tailored to suit different applications, offering soft yet impactful lighting that enhances both comfort and style in any space.





With **SENSE** downlights, the guest room is bathed in both focused lighting for the bed and lounge area and a soft general light that brightens the space. The clean design complements the light-colored decor, creating a harmonious, soothing atmosphere.

Project: Mist Hot Spring Hotel, Xuchang, China



**SENSE** S68R1

# Corridors & Walkways

# Corridors & Walkways



Lighting in hotel corridors and walkways serves both practical and aesthetic purposes. It guides guests through the space with subtlety, ensuring safety and comfort, while contributing to the overall flow of the hotel's design.

Low-level, integrated lighting along walls or floor-mounted fixtures can create a serene and welcoming atmosphere. Indirect lighting can enhance the feeling of spaciousness, while strategic highlights may draw attention to architectural details or artwork, offering a soft yet effective transition between different areas.

## RECOMMENDATIONS

SENSE



FUSION



MODULE 26



GLAMOR

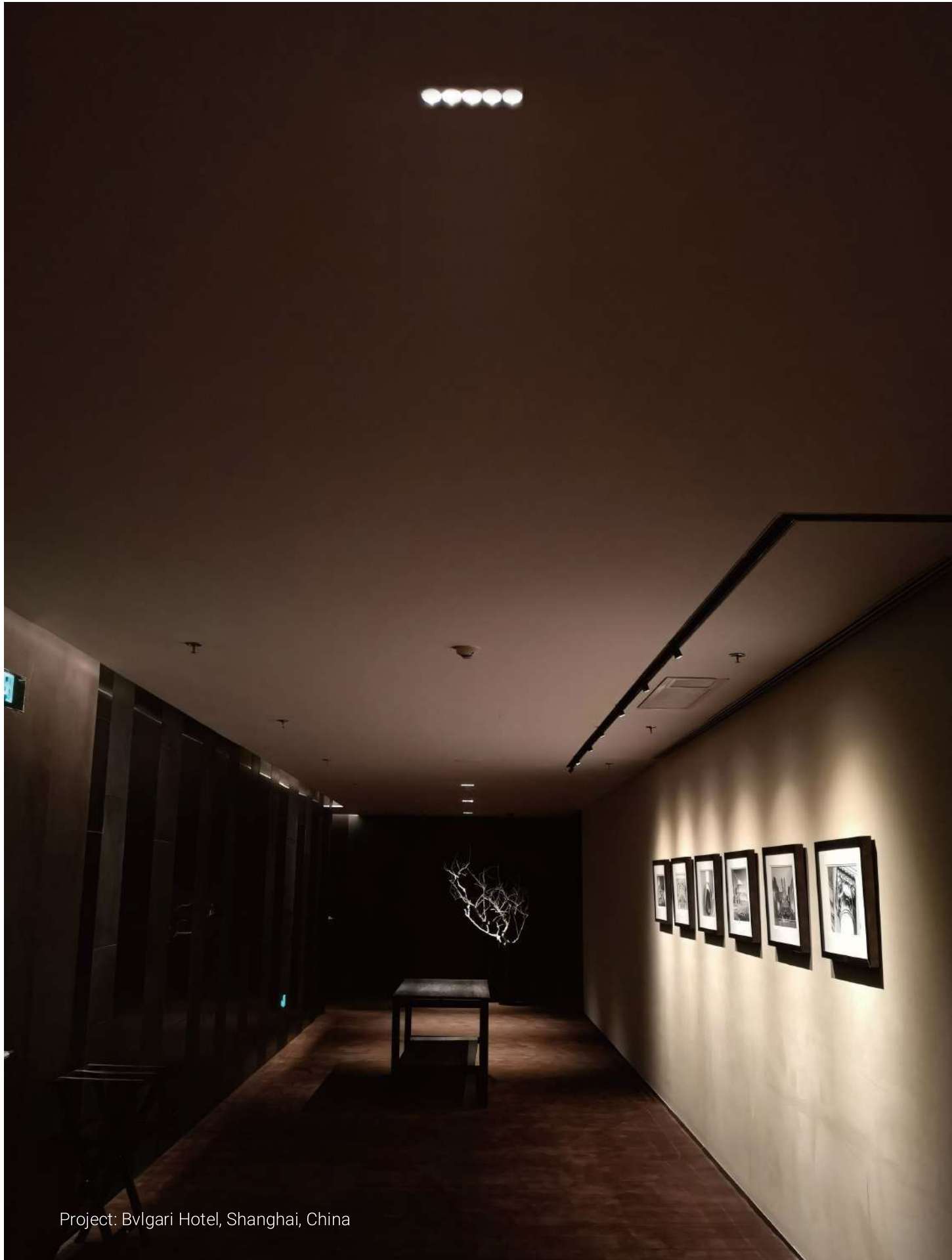


MINT



PURE





Project: Bvlgari Hotel, Shanghai, China

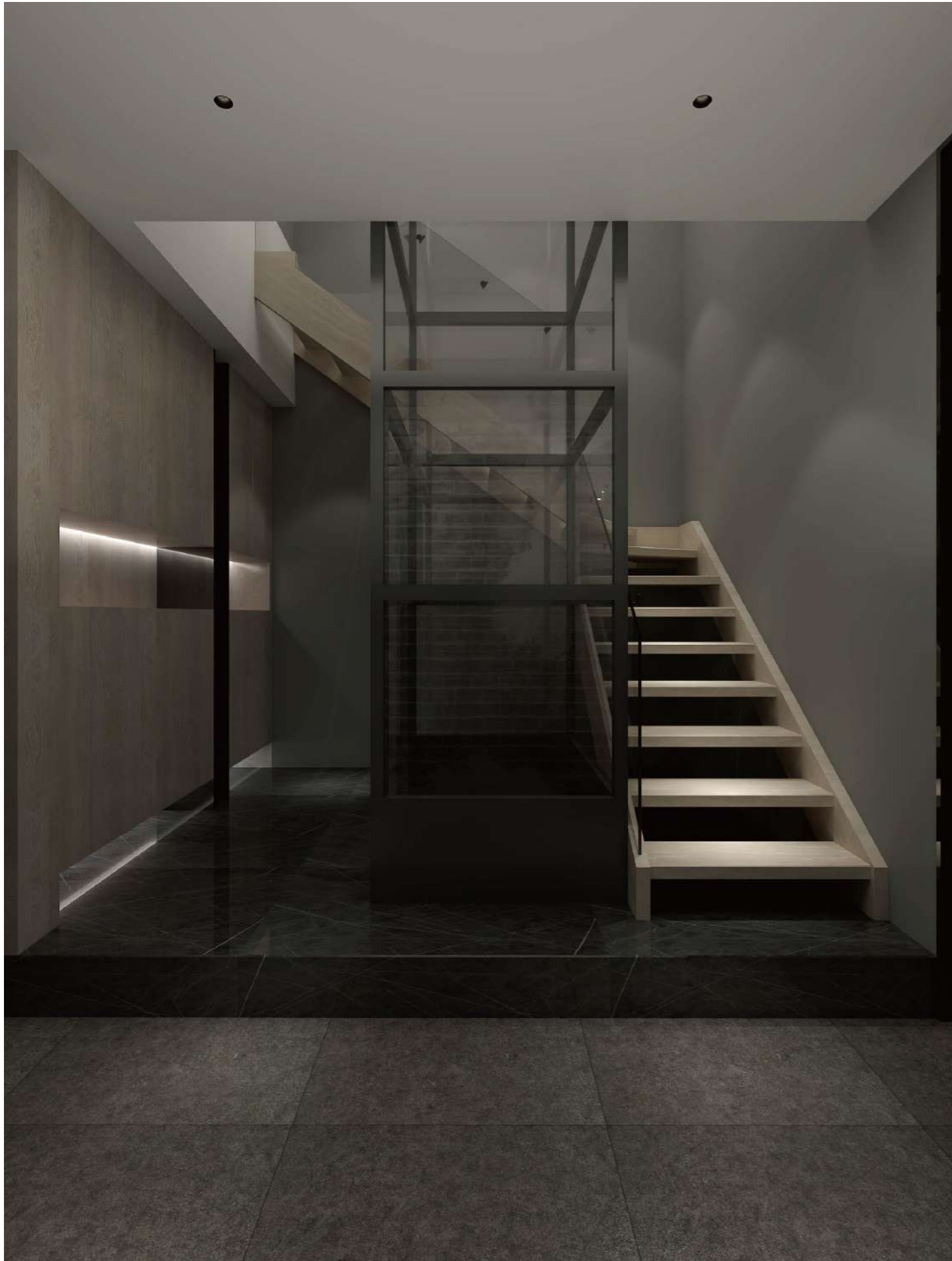
The hotel corridor comes alive with **PURE** track lights, strategically illuminating the artwork with a focused brilliance that creates visual intrigue. These targeted light beams bring attention to each frame, while **FUSION** downlights provide an encompassing wash of light in the center, softening shadows and enhancing the feeling of openness. Together, they create an elegant, layered lighting effect that adds depth and character to the space.



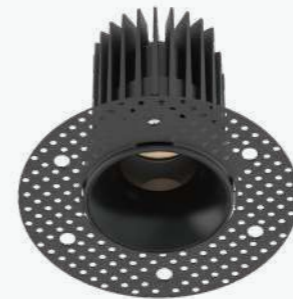
**PURE** M



**FUSION** FF5



As you approach your staircase, the **SENSE** downlights provide smooth, even lighting in a space where functionality meets design. With its trimless configuration, this downlight blends seamlessly into the ceiling, enhancing the modern aesthetic while providing glare-free, high-efficiency lighting. Its soft, general light creates a comfortable and welcoming atmosphere in this crucial, often-overlooked space, making every step feel more inviting.



**SENSE** S55RT1-EI





MINT 280

Providing bright and even light, the **MINT** ceiling lights transform the stairwell into a well-lit, neat area. The uniform brightness enhances the space's design while maintaining an inviting atmosphere, perfect for guiding individuals through the building with ease and clarity.



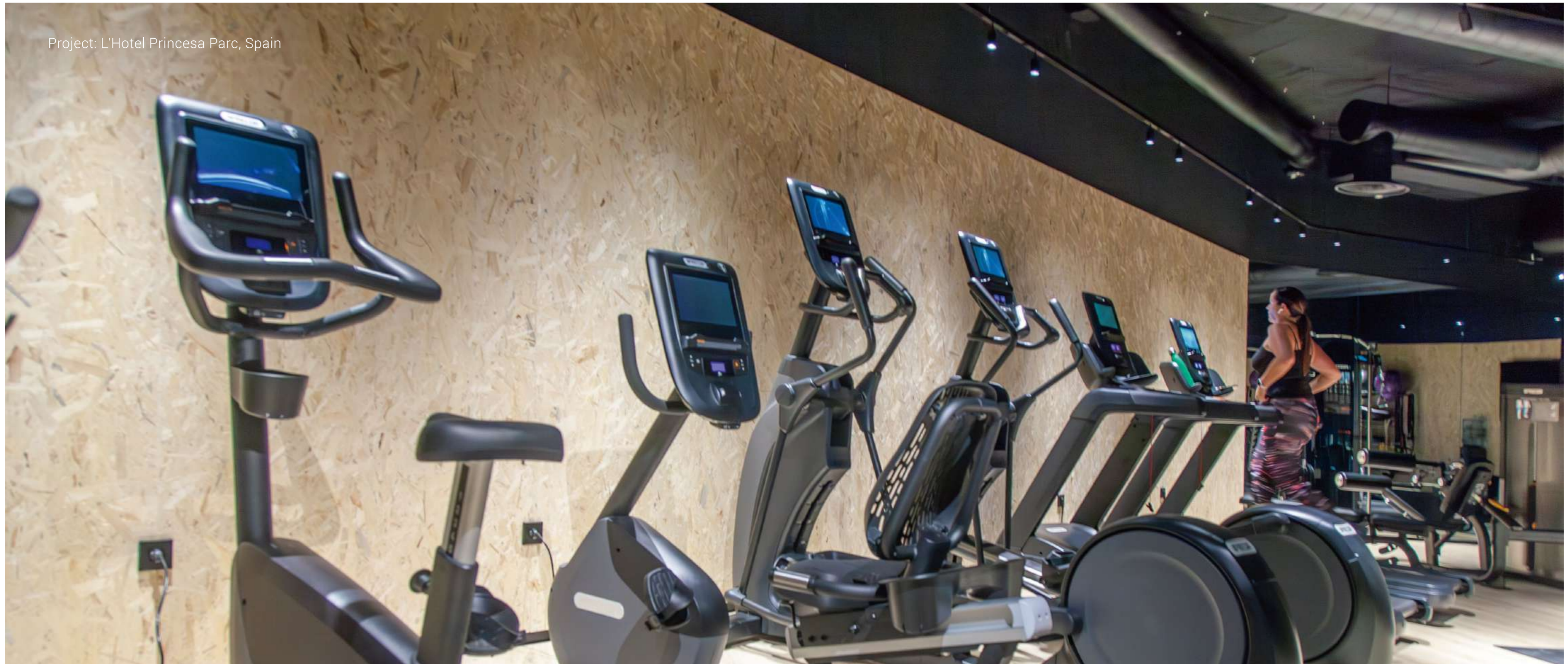


In this bustling public corridor, the **GLAMOR** ceiling lights provide uniform, bright illumination. The light spreads evenly across the space, creating a welcoming and pristine environment. Its balanced brightness ensures that the corridor feels both spacious and functional, ideal for maintaining clarity in busy areas.





# Fitness, Spa & Wellness Centers



Project: L'Hotel Princesa Parc, Spain

# Fitness, Spa & Wellness Centers

The right balance of light in promoting both energy and relaxation can elevate the experience of physical activity and rejuvenation. Bright, focused lighting in fitness areas encourages motivation and focus, while softer, ambient lighting in spa and wellness zones fosters a calm and soothing environment.

Lighting can accentuate the spa's serene textures and the sleekness of fitness equipment, creating a seamless connection between vitality and tranquility.

## RECOMMENDATIONS



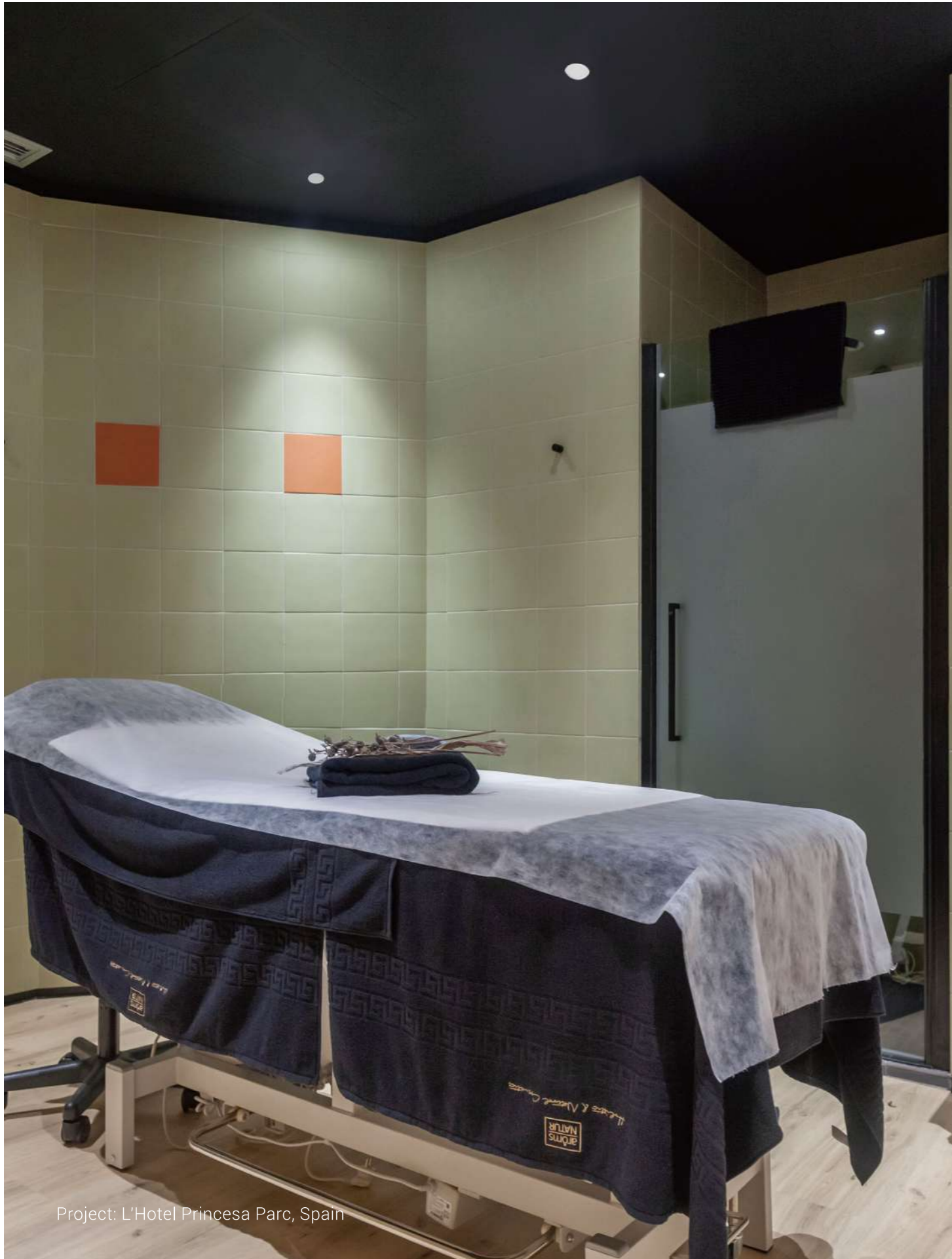


Project: Padma Hotel, Semarang, Indonesia

Transforming the gym with bright, even light, **CLUB** square downlights offer superior performance in high-ceilinged areas. The lights spread uniform brightness, creating an invigorating and well-balanced atmosphere. Perfect for energizing spaces, they deliver the ideal combination of light output and comfort for a motivating workout experience.



**CLUB** M3+TSA1



Project: L'Hotel Princesa Parc, Spain



MINUX 44

Providing both style and function, the **MINUX** downlights enhance the spa's ambiance. Installed discreetly into the ceiling, they offer efficient general lighting for the corridor and immersive illumination in the treatment rooms, setting the perfect mood for a soothing massage session.



Project: Bvlgari Hotel, Shanghai, China



Perfectly embedded within the striped ceiling, the **SPACE 60** linear lights offer even, gentle lighting across the yoga studio. With a glare free design, they provide optimal illumination without distractions, enhancing the calm, peaceful ambiance ideal for yoga practice.



**SPACE 60**



Project: L'Hotel Princesa Parc, Spain

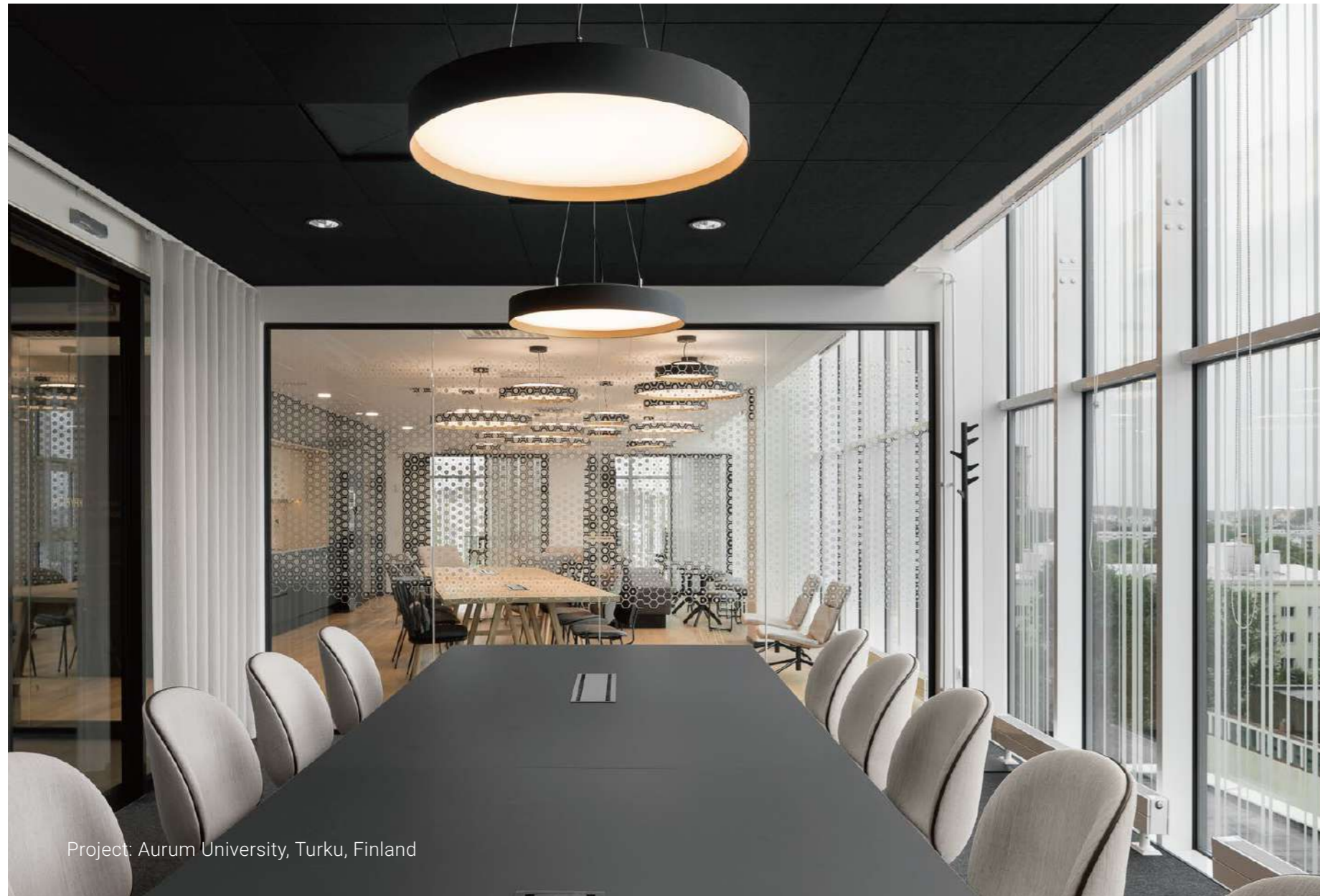
In the locker and changing areas of this hotel gym, the **TAKEO** downlights create a bright, efficient lighting scheme with their 50° flood beam angle, providing general lighting that spreads evenly across the space. The IP54 protection ensures resistance to moisture, making them perfect for high-humidity environments.

Additionally, with interchangeable lenses, these versatile downlights allow you to adjust the beam angle post-installation, offering flexibility with options such as the 25° spot for focused lighting or the super-wide flood for expansive illumination.

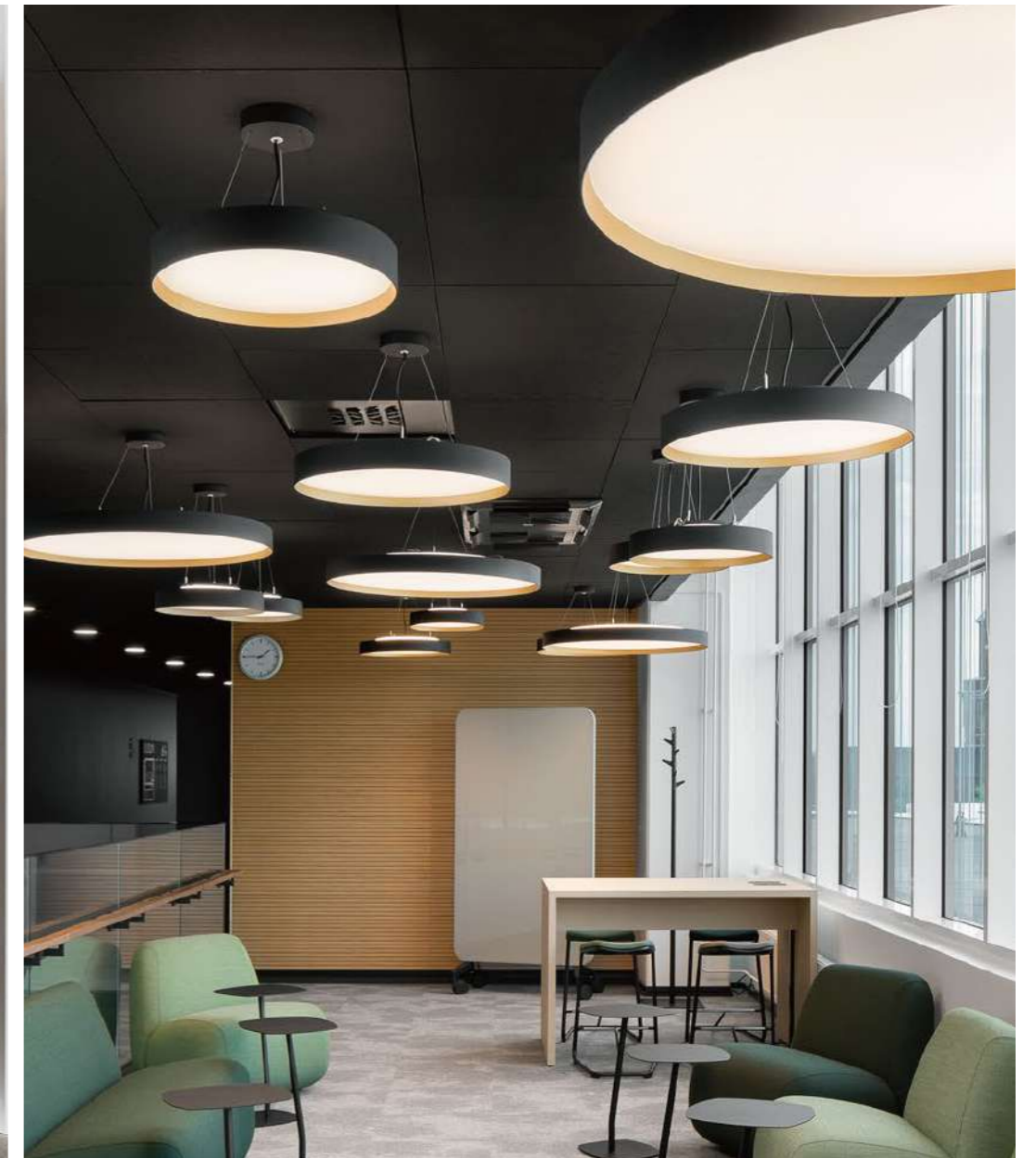


**TAKEO** T75

# Conference & Meeting Rooms



Project: Aurum University, Turku, Finland



## Conference & Meeting Rooms

The acceptable lighting in conference and meeting room should strike a balance between functionality and professionalism. It should be bright enough to facilitate focus and collaboration, yet adaptable to suit various needs, from presentations to private discussions.

A combination of overhead ambient lighting and adjustable task lighting allows the space to adapt to different activities. Accent lighting can help define areas of importance, such as presentation screens or display tables, adding an extra layer of emphasis where needed.

### RECOMMENDATIONS

SENSE



CLUB



FUSION



MODULINE 26



SUGAR



FUSION LINEAR SYSTEM

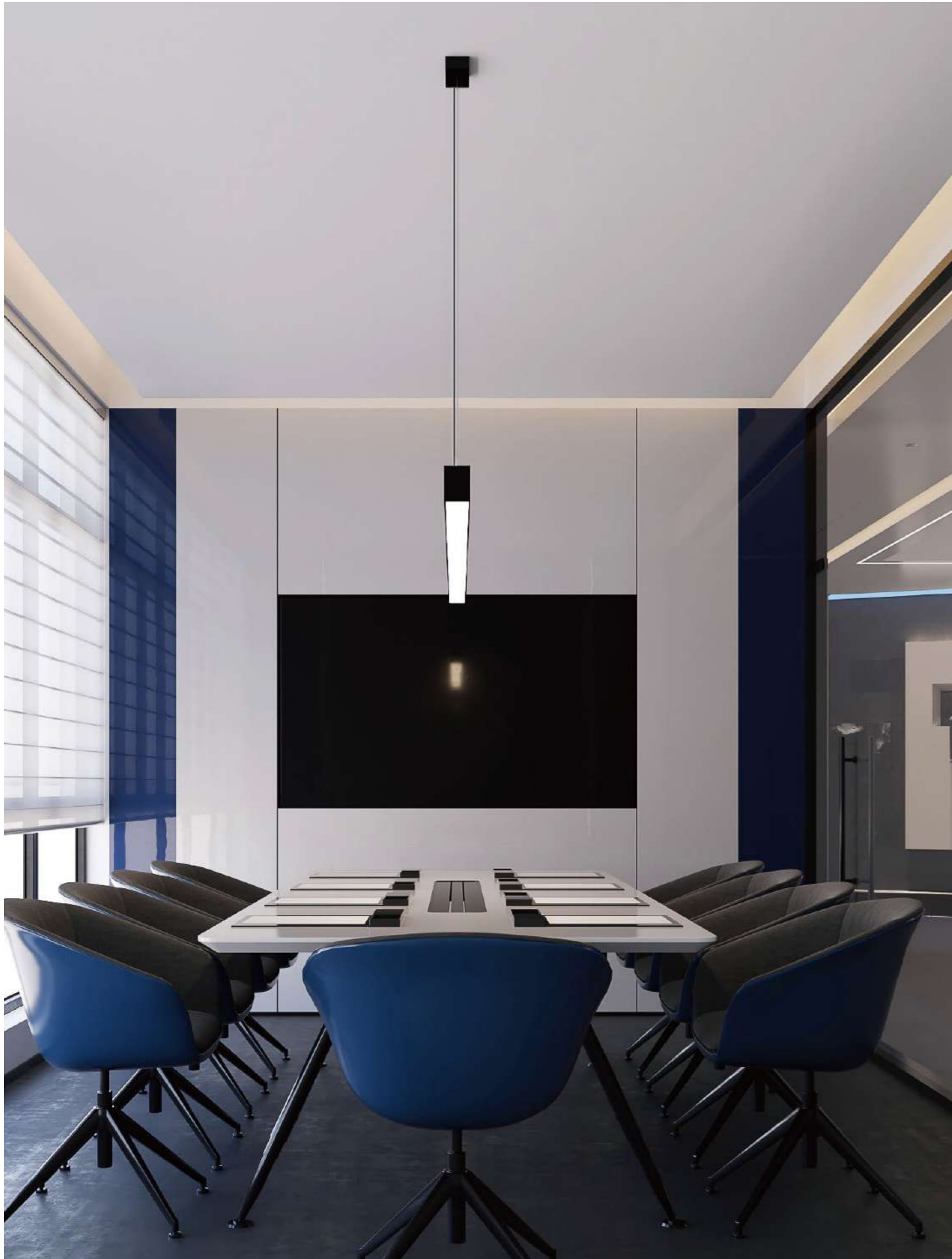


SPACE 60



DASH





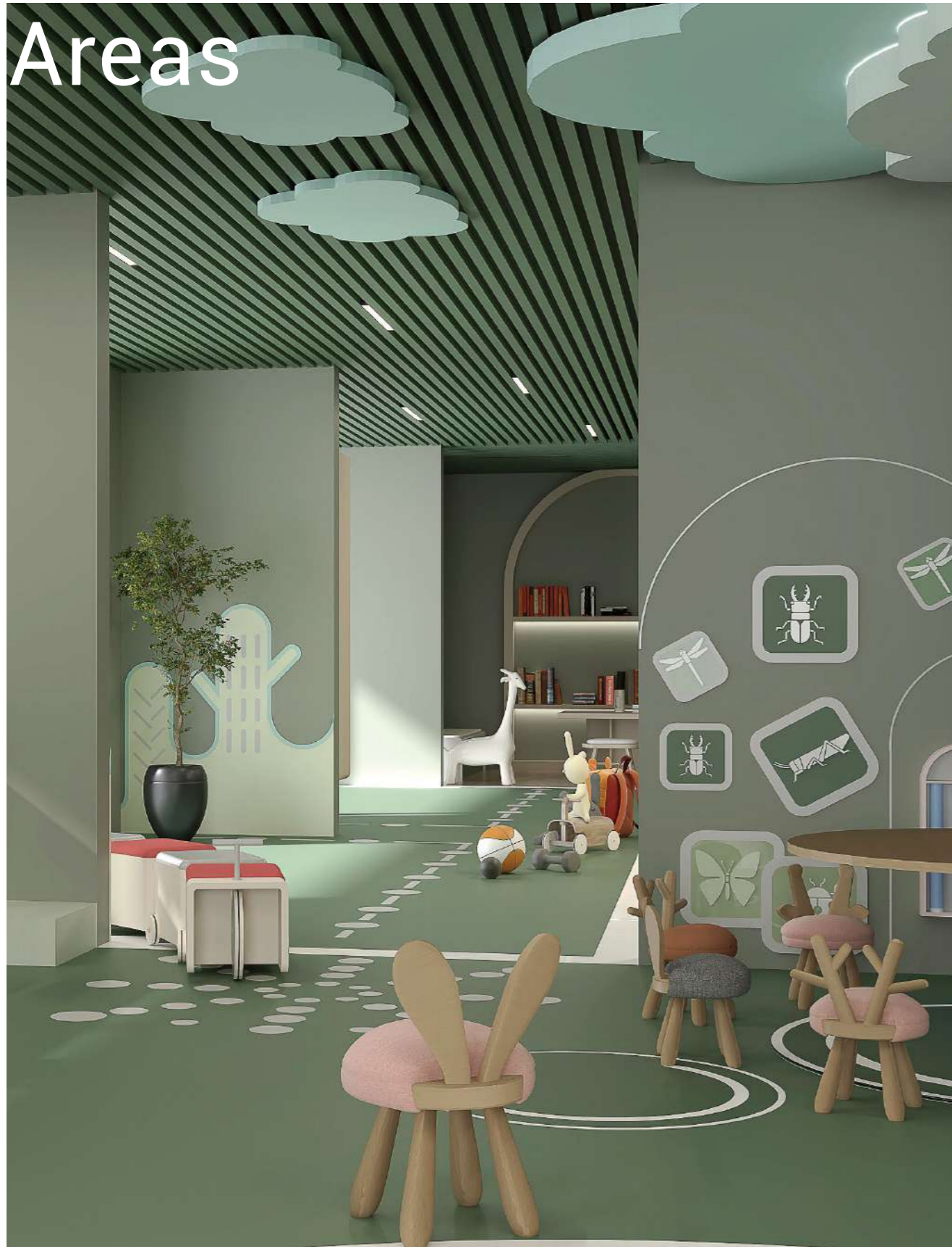
Designed with precision, the **SPACE 60** linear lights illuminate the conference room with a gentle, even glow. Their microprismatic cover ensures visual comfort, making them ideal for long meetings. The linear downlights cast uniform light across the meeting table, creating a bright and inviting atmosphere for clear communication and collaboration.





# Children's Areas

# Children's Areas



In children's play areas within a hotel, lighting helps to create a fun, safe, and inviting environment. A playful lighting scheme, featuring bright, vibrant hues and soft, diffused light, enhances the overall experience while maintaining a sense of calm.

Strategic lighting can highlight interactive features or activity zones, drawing attention to areas designed for engagement and play. A warm, welcoming glow can make the space feel cozy and comforting, encouraging children to explore and interact with their surroundings in a playful yet secure atmosphere.

## RECOMMENDATIONS





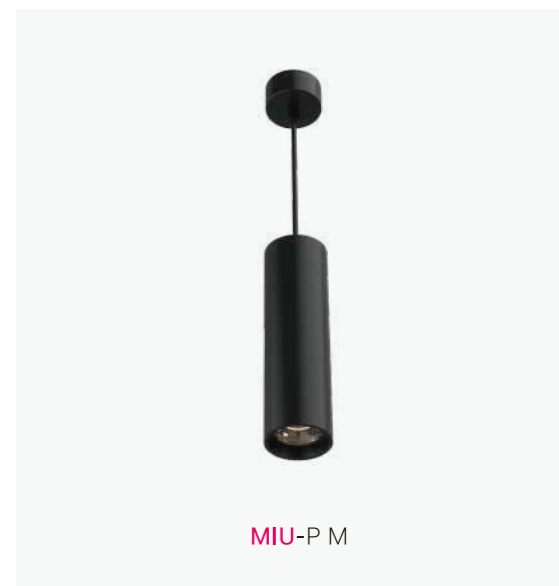
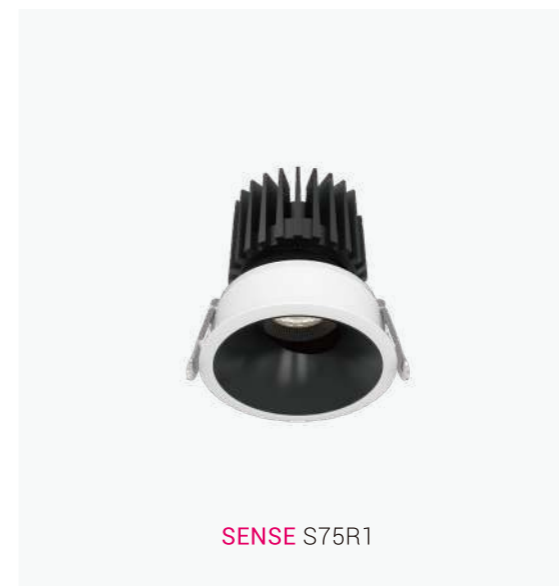
In this fun and lively play zone, the **GAME** ceiling lights blend with the bold, colorful ceiling design, providing even, glare-free lighting that fills the space with warmth and brightness. Featuring a microprismatic cover, these lights offer enhanced eye comfort, creating soft and gentle illumination throughout the room.

Building on this vibrant atmosphere, the **SPACE 60** linear lights further enhance the space with uniform, soft lighting that complements the playful environment. Installed within the linear structured ceiling, they ensure the overall area remains bright and welcoming, making it an ideal space for both children and parents to enjoy.





In this joyful and bright play area, the **SENSE** downlights deliver soft, uniform lighting that spreads warmth throughout the space, complementing the playful design. Integrated into the innovative semi-open ceiling structure, they provide perfect general lighting. The **MIU** pendant lights further enhance the atmosphere, spotlighting key areas and adding decorative flair, making the area both functional and visually stimulating for children and families. Additionally, the **GAME** ceiling lights, featuring a mix of installation options, add a touch of detail to the ceiling while offering diffused light, contributing to the overall general lighting and enhancing the space's lively ambiance.



# Residential



# Living Rooms





# Living Rooms

As the central gathering space in any home, the living room's lighting plays a crucial role in setting the tone for comfort and warmth. Layered lighting—combining ambient, task, and accent lighting—can help achieve both functionality and a welcoming atmosphere.

Pendant lights or accent lamps can highlight specific areas or design features, while a mix of soft and bright lighting adjusts the mood for various activities, from lively socializing to quiet evenings. With the right balance, the living room can feel equally cozy and vibrant, offering a space that adapts to both relaxation and entertainment.

## RECOMMENDATIONS





With a focus on both aesthetics and efficiency, the **MINUX** fixtures effortlessly enrich this living room's design. It provides a soft, encompassing light that gently envelops the entryway, while simultaneously spotlighting carefully chosen decor items. The fixture's refined, understated design contributes to the space's elevated look, blending harmoniously into the room's high-end, sophisticated atmosphere.





Project: Pinto Architectural and Design Agency, France

In a classic, European-inspired living room, the **KENZO** spotlights provide versatile, focused lighting that enhances both functionality and style. These compact spotlights can be recessed into the ceiling as downlights or extended to create accent lighting, highlighting key features such as furniture and artwork on the walls. Their flexibility makes them the perfect tool for showcasing the room's elegant details.



**KENZO** K1X30



# Bedrooms



Project: Private Residence Ramat Hasharon, Israel

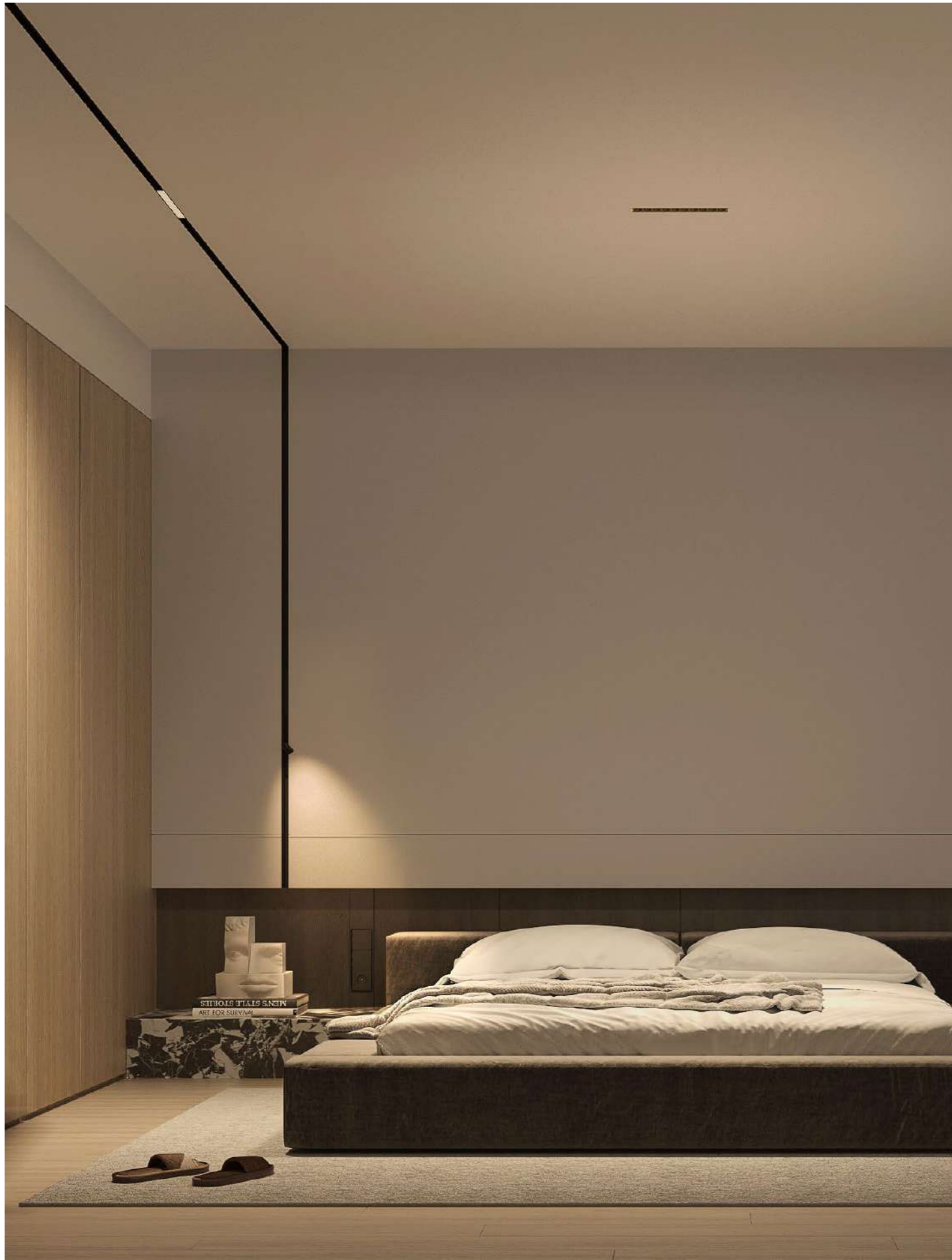
# Bedrooms

The bedroom is a sanctuary for rest, and the lighting design should complement this purpose by creating a peaceful, calming environment. Soft, warm light fills the space with a sense of tranquility, while task lighting near the bedside provides focused illumination for reading or other nighttime activities.

Subtle accent lighting can highlight design features, such as the bed frame or artwork, contributing to the room's overall aesthetic. Thoughtful lighting choices in the bedroom allow for seamless transitions between relaxation and function, ensuring the space feels cozy yet functional.

## RECOMMENDATIONS



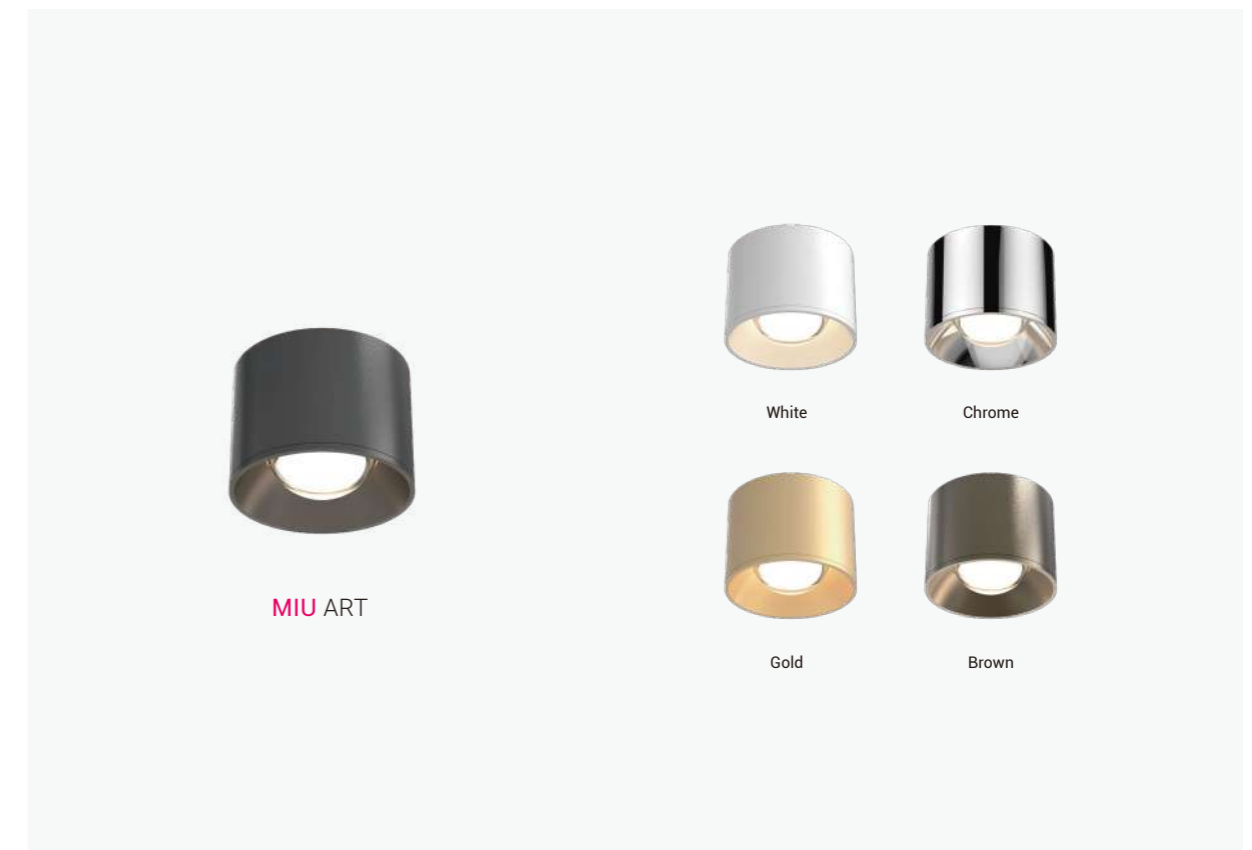


With the **MODULINE 26** embedded track, the lighting layout is as functional as it is stylish. Spotlights positioned at the headboard deliver precise task lighting for reading, while general light inset along the ceiling softly illuminates the walkway, ensuring even light throughout the space. The **FUSION** linear downlight in the center of the ceiling offers an efficient, high-performance light source that brightens the entire room without causing glare, completing the bedroom's serene and modern ambiance.





In the serene and cozy bedroom, the **MIU Art** downlight adds both beauty and function. Its ultra-low profile provides subtle, gentle lighting that softly illuminates the bedside corner, enhancing the peaceful atmosphere. The sleek and aesthetically pleasing design offers a decorative accent while offering just the right amount of light for relaxation and comfort.





In this cozy bedroom, the **MINUX** downlights serve as the perfect source of general light. Compact and highly efficient, they integrate seamlessly with the room's design, enhancing the cozy, warm atmosphere without drawing attention to the fixture itself. The soft, even illumination creates a peaceful retreat, subtly highlighting the room's comfort and simplicity.



**MINUX** 44



The **SUGAR** ceiling lights deliver soft, even illumination across the lounge area of the bedroom. With its microprismatic cover, it creates glare-free, visually comfortable glow, and a peaceful environment where relaxation takes center stage. Mounted as a ceiling downlight, it seamlessly integrates into the room, offering a natural flow of light that enhances the overall sense of calm and comfort.



**SUGAR** 350



# Home Offices & Studies

# Home Offices & Studies

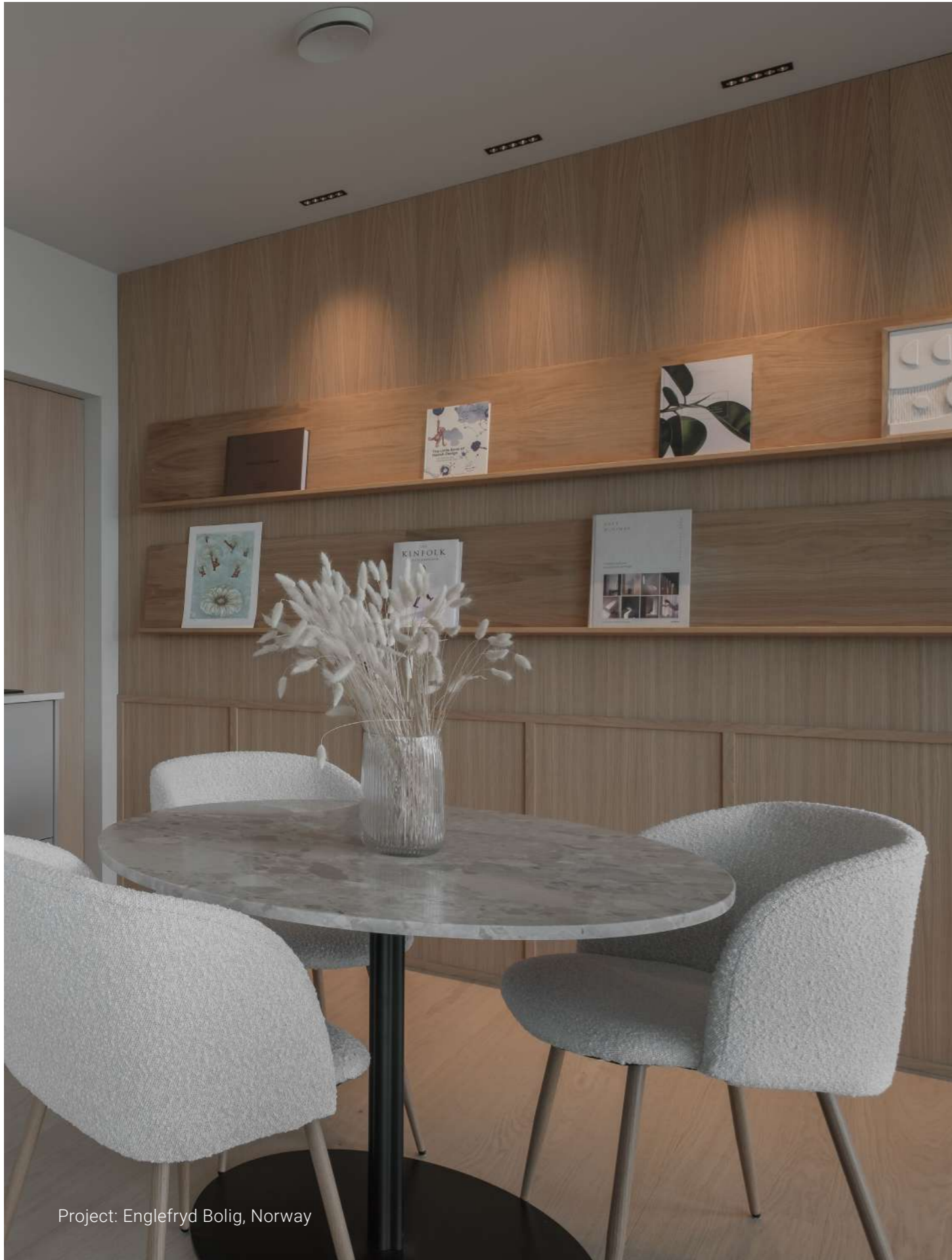


When designing a home office or study, lighting should inspire productivity and focus, while also creating a comfortable environment for extended hours of work. Bright task lighting is essential, particularly for reading or computer work, helping to reduce eye strain. Ambient lighting, meanwhile, ensures the space feels relaxed yet energized, supporting a productive atmosphere.

Accent lighting can add personality and charm to the room, highlighting personal items or artwork. A well-lit home office fosters creativity and concentration, transforming the space into an efficient and motivating work area.

## RECOMMENDATIONS





Project: Englefryd Bolig, Norway

The subtle, precision lighting from **FUSION** downlights complement this by gently illuminating the space with soft scalloped light that creates an organized, sophisticated vibe, making this home office both efficient and aesthetically pleasing.



**FUSION** FF5



In your home office, the **CLUB** downlights excel in providing both accent and general lighting. Positioned strategically on the ceiling, it creates a welcoming ambiance while offering focused illumination for your desk area. The high-efficiency design ensures long-lasting performance, while the warm light complements the wood tones of the room, elevating both productivity and comfort. For a sleek, trimless finish, choose from two flange options: the KA5 or the KA5-EI.



**CLUB** M3+KA5



**CLUB** M3+KA5-EI



With **MODULINE 26**'s track system, paired with exquisite light inset with two short-cylinder spotlight, creates a home office lighting scheme that is both functional and aesthetically pleasing. The accent lighting from the fixed spotlight inset brings focus to key areas while adding an element of sophistication to the space. The light with the wood toned environment enhances the room's clean, polished look, making it an ideal choice for a serene and productive workspace.



**MODULINE 26**  
FRS72



# Bathrooms

# Bathrooms



Lighting in the bathroom should strike a balance between practicality and indulgence, enhancing both function and atmosphere. Around mirrors, bright task lighting ensures clear, precise illumination for grooming, while softer, ambient lighting creates a soothing environment for relaxation.

Accent lighting can add visual interest by highlighting architectural details or features such as a bathtub or shower. The right lighting turns the bathroom from a purely utilitarian space into a serene retreat, where both everyday routines and moments of relaxation are elevated.

## RECOMMENDATIONS

MINUX



SENSE



TAKEO



CLUB



FUSION



BAY





The **CLUB** downlight - IP44 offers a sleek, modern lighting solution perfect for contemporary bathrooms. Featuring the advanced M3 LED engine, it ensures high efficiency and excellent light quality with minimal glare. The TRF1 - IP44 trim configuration adds to its stylish and streamlined appearance, seamlessly blending into the space.

Available in various unique configurations, this fixture enhances the bathroom's aesthetic while providing reliable general light. For more demanding environments, an IP65 version is also available, offering even higher protection against moisture and dust, ideal for use in steamy or wet areas like shower stalls or steam rooms.



**CLUB**  
M3+TRF1-IP44



**CLUB**  
M3+TA5-IP65

# Dining Rooms & Kitchens



# Dining Rooms & Kitchens



In the dining room and kitchen, lighting is key to creating a dynamic and inviting atmosphere, whether for intimate meals or social gatherings. Overhead lighting in the dining area, such as a statement chandelier or pendant lights, sets the mood, while providing ample light for dining.

In the kitchen, practical task lighting ensures visibility for food preparation and cooking areas. A thoughtful combination of ambient and task lighting creates a balanced atmosphere, making these spaces functional and welcoming for both cooking and socializing.

The right lighting enhances the dining experience, fostering connection and enjoyment.

## RECOMMENDATIONS

TAKEO



SENSE



CLUB



FUSION



PURE



MODULINE 26



MODULINE 05



MIU





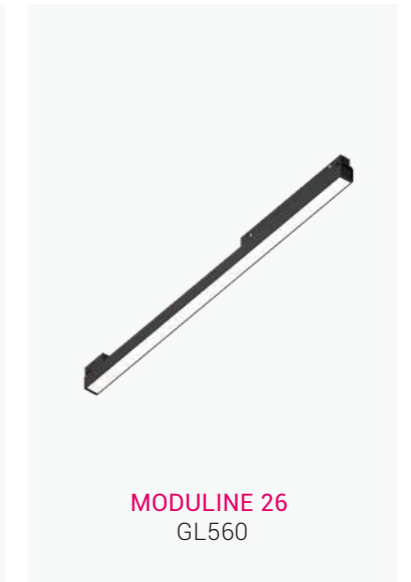
The **MODULINE 26** track system with drop-shaped PS60 pendant lights brings refined elegance to the kitchen island. These pendant lights serve as a striking focal point while providing effective accent lighting. The customization of their length allows for tailored lighting, blending effortlessly with the minimalist design to create a welcoming and functional space.





Project: Pakuwono Residence, Indonesia

Designed for flexibility and aesthetic appeal, the **MODULINE 26** pendant track system is perfect for the dining area. Equipped with spotlights and general light insets, this system provides both accent and focused lighting. The pendant track above the dining table highlights the area, while the adjustable spotlights ensure precise lighting where needed. The accent light insets create a balanced, bright atmosphere throughout the room. Additionally, the system offers optional general light insets, providing soft, well-diffused light that extends the space's look while offering general lighting for the hallway. With various inset combinations, **MODULINE 26** caters to all the lighting needs of a dining area, enhancing both functionality and style.





Project: Englefryd Bolig, Norway

The **FUSION** downlights provide consistent, bright general lighting for the kitchen's main walkways, ensuring the space remains vibrant and easy to navigate. This lighting solution works in perfect harmony, balancing practicality with a stylish, fresh atmosphere that enhances the overall kitchen design.



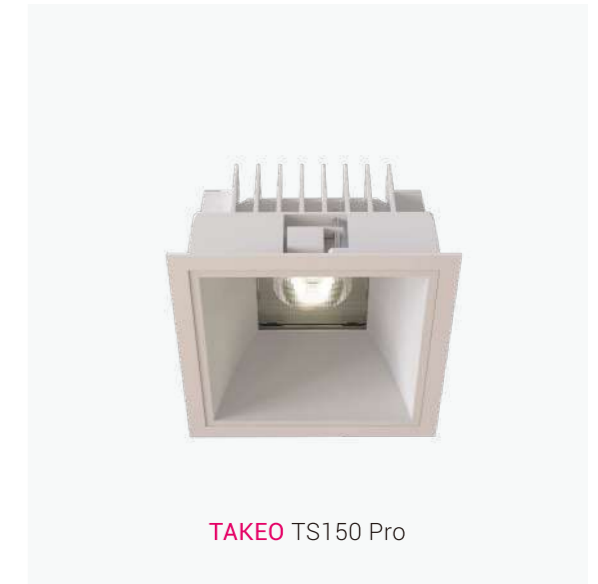
**FUSION** FF5



The **TAKEO** downlights effortlessly light up the open kitchen, offering powerful, energy-efficient illumination throughout. Designed with practicality in mind, it features an easy-replaceable modular design that makes future configuration changes simple, all while complementing the cozy, warm-toned decor. Additionally, **TAKEO** is available in a square option, providing a wider lighting angle for more even and bright general lighting across the space, enhancing the kitchen's overall ambiance with uniform illumination.



**TAKEO** T75



**TAKEO** TS150 Pro





# Circulation Areas

# Circulation



Circulation spaces, such as hallways, staircases, and corridors, play an important role in the flow of the home, and lighting can enhance their functionality and aesthetic appeal. Staircases benefit from subtle yet effective lighting, whether through recessed lighting or wall sconces, ensuring safety while adding visual appeal.

Hallways and corridors can be softly lit to create a welcoming pathway that ties the home together. Accent lighting along walls can highlight architectural features, bringing these often-overlooked areas to life. Thoughtful illumination ensures these spaces feel as integrated and stylish as the rooms they connect.

## RECOMMENDATIONS

SENSE



TAKEO



CLUB



FUSION



PURE



KOI

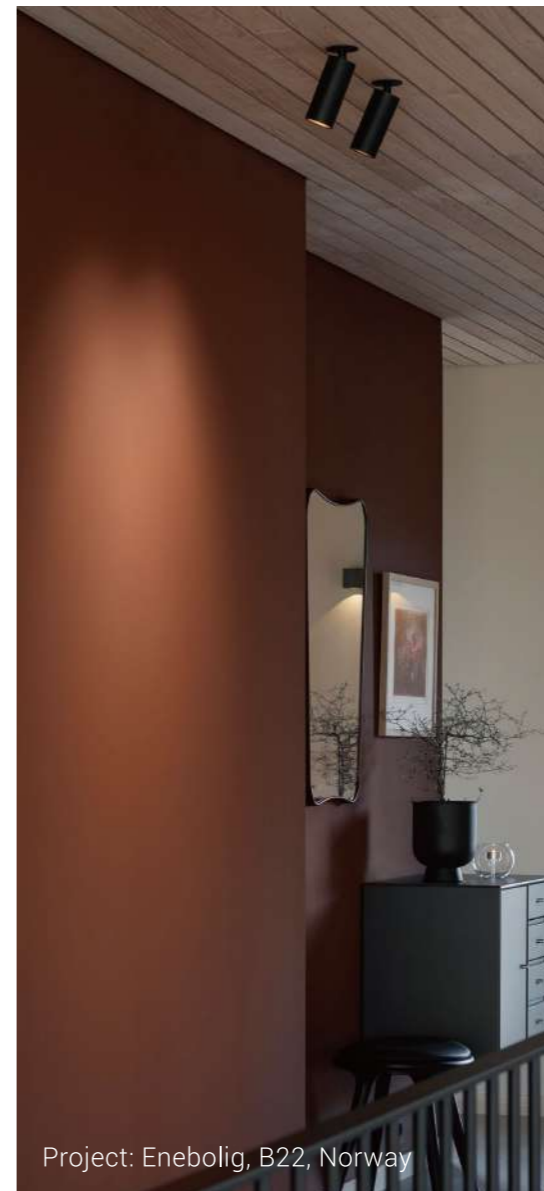


Project: Private Residence Taipei City, Taiwan, China



Project: Private Residence Skardsøya, Norway

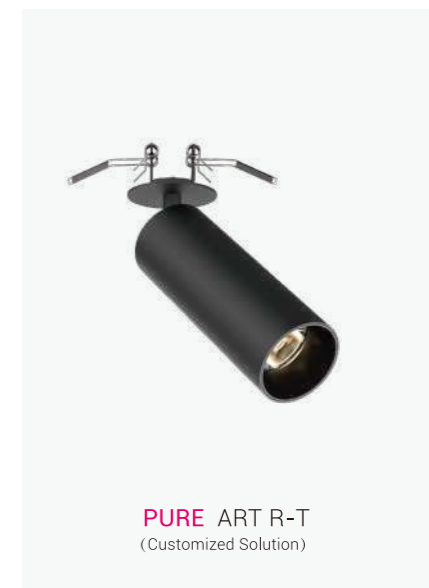
Designed for flexibility and style, the **PURE** track lights fit perfectly for circulation space. With customizable length and spotlight arrangement, the track system allows for precise lighting control, illuminating the space as needed. Whether highlighting artwork or illuminating the entire corridor path, this product series brings both functionality and sophistication, seamlessly blending with the space's design. Additionally, **PURE** offers tailored solutions to meet specific project requirements, providing customized options to address installation challenges posed by different ceiling structures.



Project: Enebolig, B22, Norway



PURE M



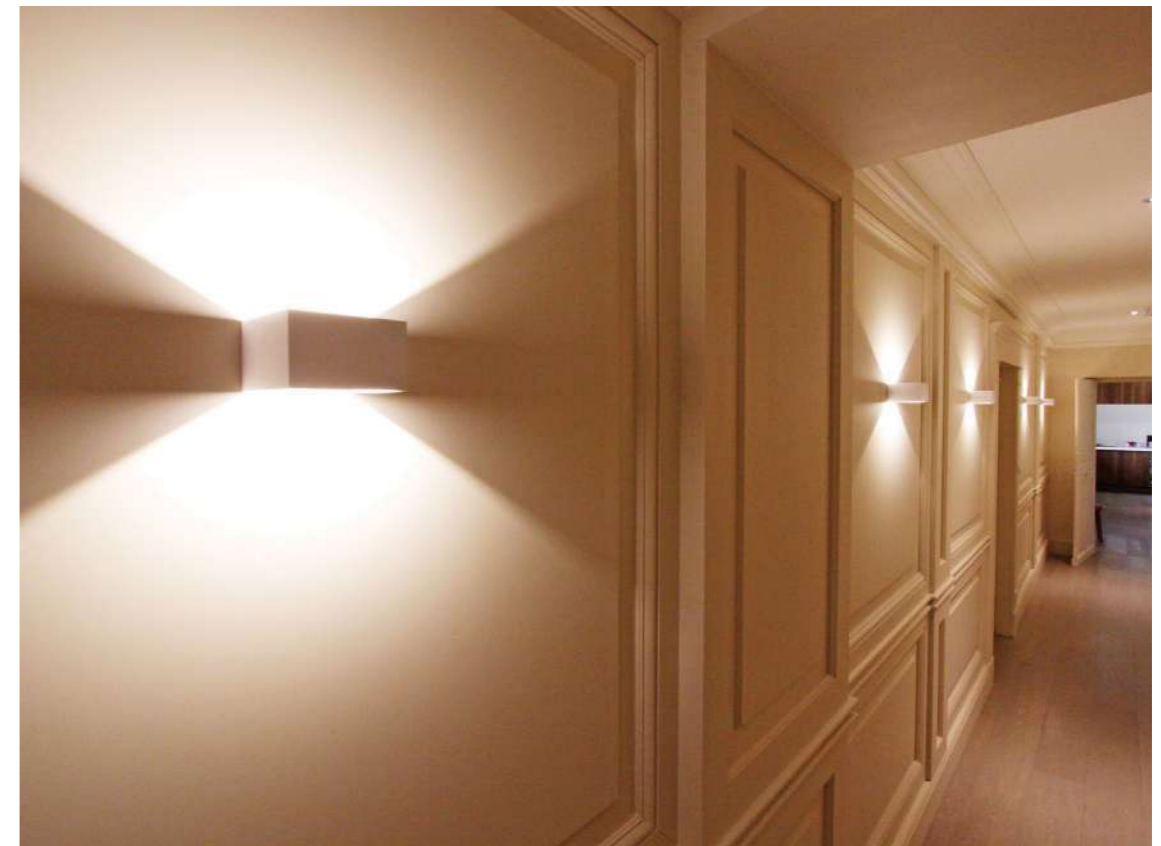
PURE ART R-T  
(Customized Solution)



Project: Private Residence Küsnacht, Switzerland

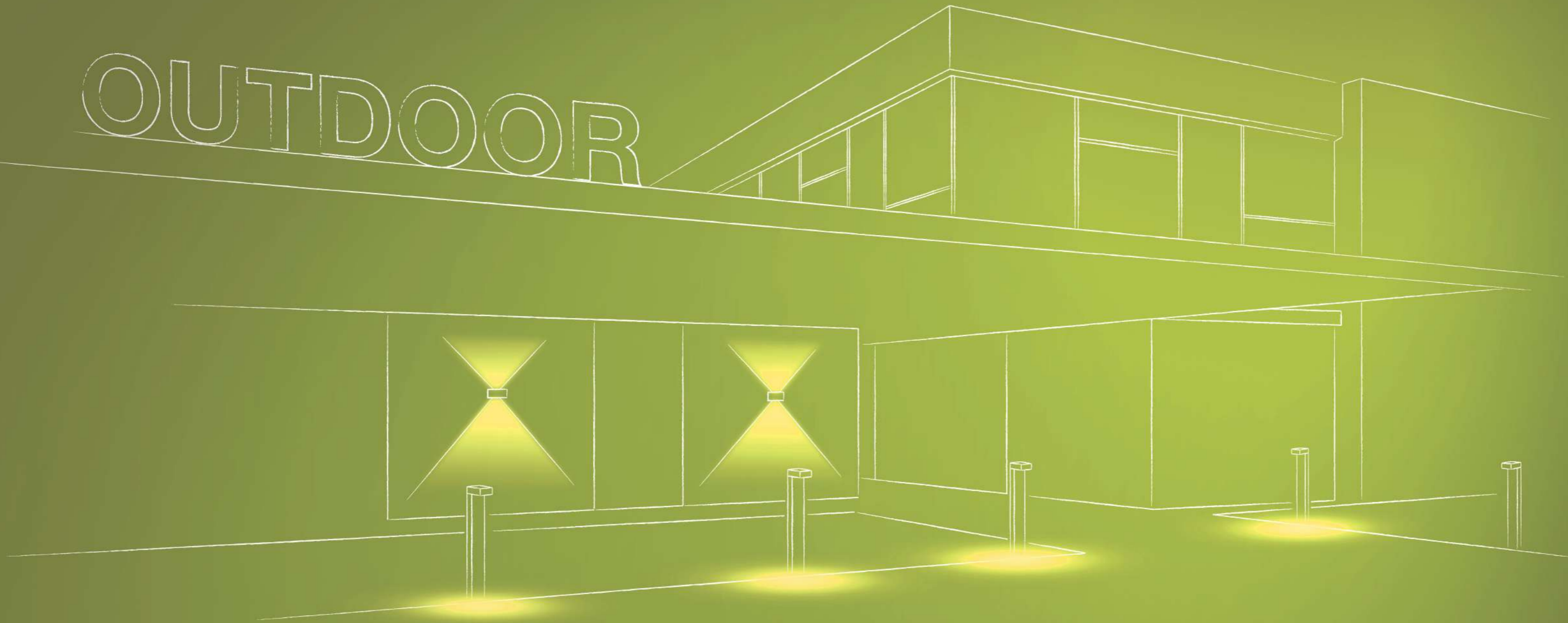


With their modern square design, **KOI** wall lights enhance the elegance of circulation space. The upward and downward illumination creates decorative patterns on the walls, adding a layer of texture and depth. The fixtures serve as both a functional light source and a piece of art, guiding people through the space with style and a welcoming touch.



# Outdoor

OUTDOOR





# Entrances & Pathways

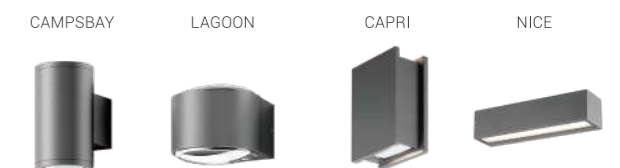


## Entrances & Pathways

Outdoor lighting for entrances and pathways is all about creating a safe, welcoming first impression while enhancing the architectural beauty of the exterior. Soft, ambient lighting along walkways and entry points ensures safe navigation, while accent lighting can be used to highlight the structure's details, such as columns, doors, or decorative elements.

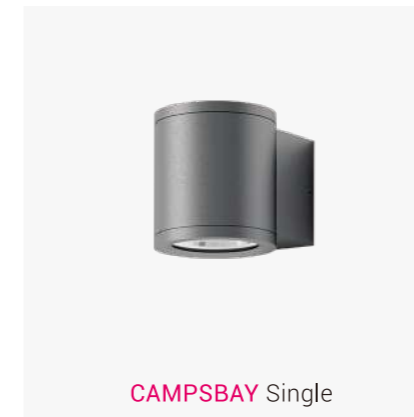
Lighting at the entrance not only provides functional illumination but also sets the tone for the entire outdoor experience, helping to create a warm, inviting atmosphere from the moment guests arrive. Thoughtfully placed lighting can transform the entrance into a statement, making it both practical and visually striking.

### RECOMMENDATIONS





Project: Private Residence Skardsøya, Norway



CAMPSBAY Single

Guiding the way along this tranquil passage, the **CAMPSBAY** wall lights create a soothing environment with their warm, soft glow. The unique upward and downward lighting pattern forms a decorative wash on the walls, perfectly balancing function with style. Their understated elegance adds a refined touch while gently leading visitors through the peaceful outdoor corridor.





For a refined and inviting entryway, the **LAKEPOINT** downlights gently illuminate the walkway, offering both practical and aesthetic value.

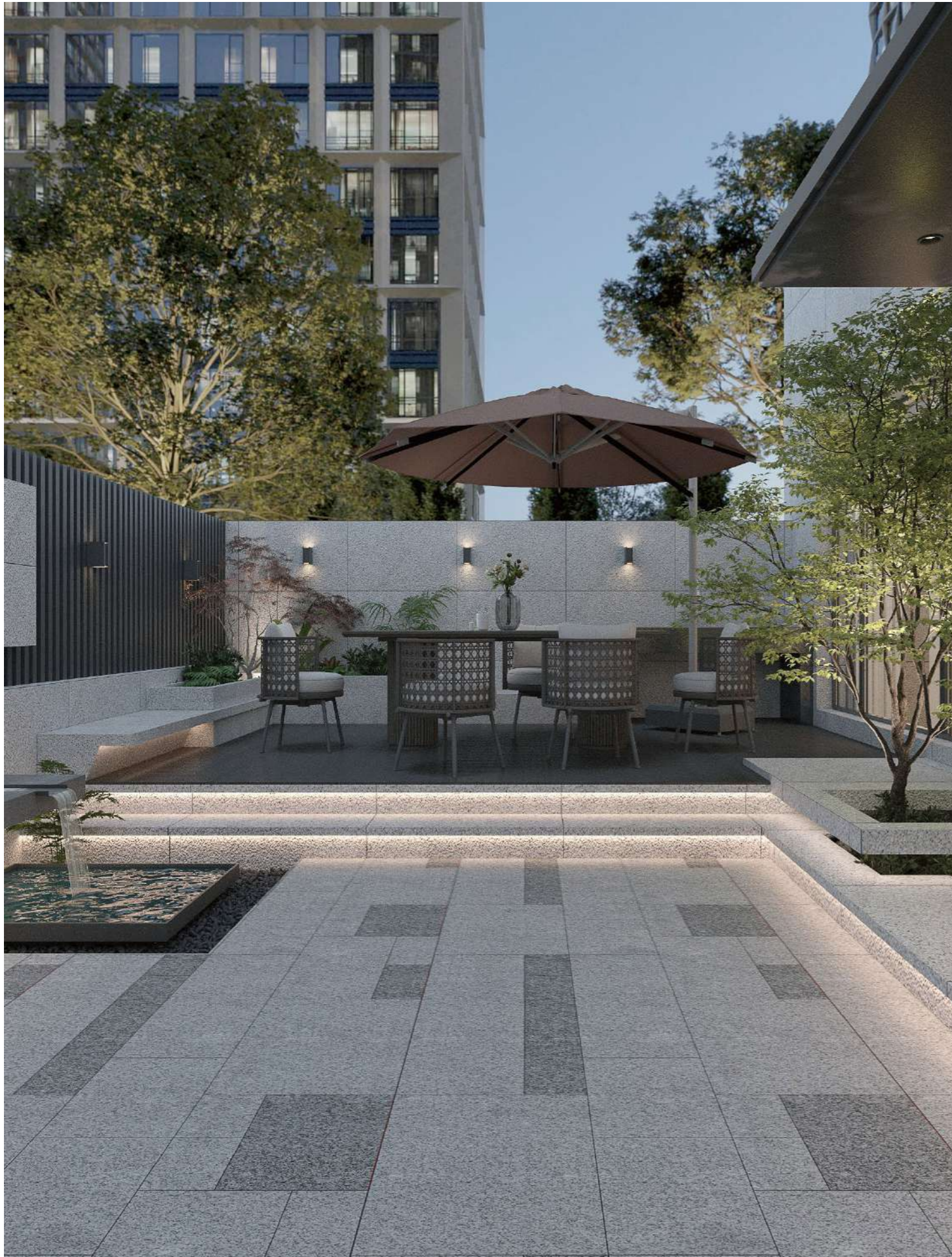
Paired with the **CAMPSBAY** wall lights, which cast both upward and downward light, this combination enhances the welcoming atmosphere, guiding guests towards the entrance with a sophisticated, layered glow.



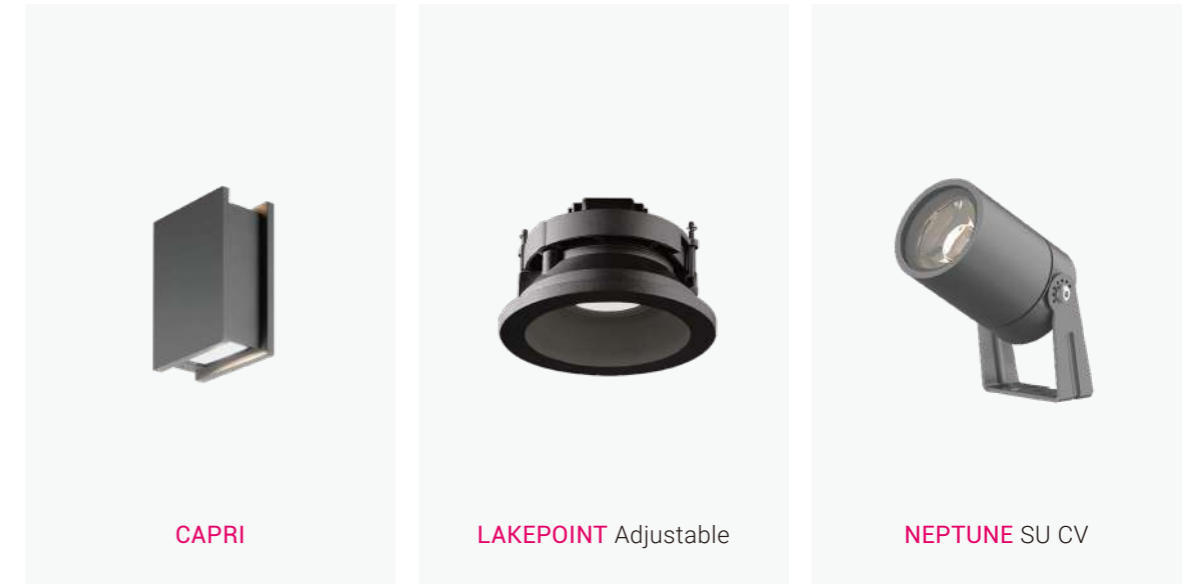
**CAMPSBAY** Double



**LAKEPOINT** Fixed

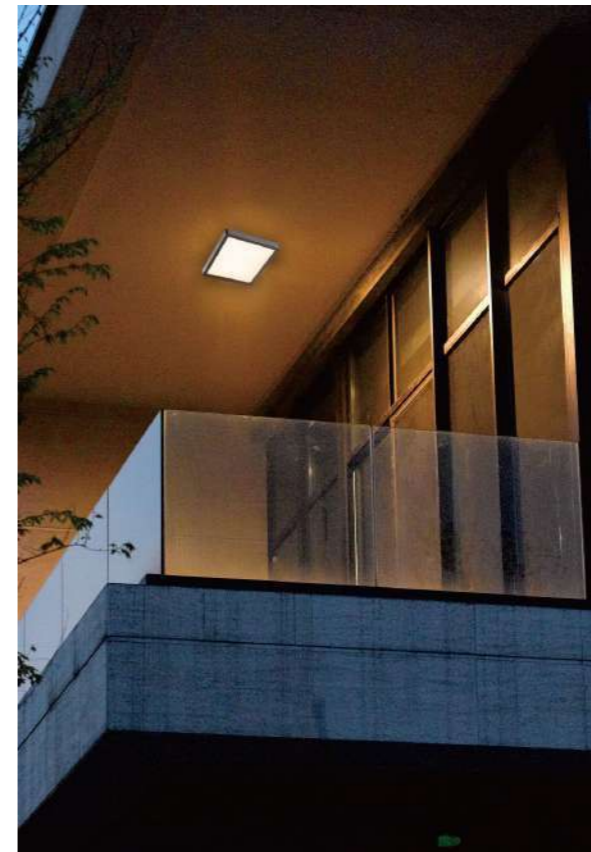


Set against the backdrop of minimalist stone and carefully placed greenery, the **CAPRI** wall lights add sophistication to the garden with their subtle up-and-down lighting, evoking both warmth and serenity. The **LAKEPOINT** downlights enhance this effect, casting soft, even light across the walking areas to create a well-lit, inviting atmosphere without overpowering the natural elements. Adding to the ambiance, the **NEPTUNE** projector lights are strategically positioned to highlight the yard's plants, bringing out their textures and creating a decorative, sculptural feel that enhances the nighttime atmosphere and adds depth to the space.





Installed in the outdoor ceiling, the **RIVA** Round ceiling light gently illuminates the path below with a soft, diffuse glow. Its unobtrusive design blends seamlessly with the surroundings, creating a serene, welcoming atmosphere. Perfect for pedestrian areas, it provides consistent, comfortable light to guide the way, enhancing the tranquility of the space.



**RIVA** Round



# Gardens & Landscapes

# Gardens & Landscapes



Project: Hotel Sorrisniva, Norway

Lighting in gardens and landscapes brings outdoor spaces to life, allowing for evening enjoyment while enhancing the natural beauty of plants and structures. Layering different lighting types—such as uplights to highlight trees or sculptures, and soft path lights to guide movement—creates depth and dimension in the garden. Accent lighting can emphasize water features, flowers, or architectural details, casting them in a new light at night.

The right lighting design makes outdoor areas feel magical and inviting, extending the usability of the garden into the evening while maintaining a connection with nature. This blend of practicality and artistry ensures that every corner of the garden is beautifully illuminated.

## RECOMMENDATIONS





**CALIFORNIA** bollard lights add a subtle, soft glow along the garden paths, bringing an elegant yet understated lighting solution to this tranquil outdoor space. Their presence offers gentle illumination that doesn't overwhelm, perfectly complementing the peaceful surroundings.

The **CAMPSBAY** wall lights, positioned at the entrance, feature a clever dual light output, offering both upward and downward illumination. This creates a warm, welcoming glow that guides visitors while adding to the decorative flair of the garden.



BAY



CALIFORNIA 12



- The top cover is designed to prevent loss, requiring a downward press to unlock, similar to the safety cap mechanism.

- Interchangeable Covers



Press Button to Switch Between 2700K and 3000K.



Along this tranquil residential path, the **POSITANO** bollard lights cast a warm, welcoming glow, creating soft, inviting light spots along the way. The gentle downward light of these outdoor fixtures illuminates the path with a calm, serene ambiance, offering a comforting “leading home” effect. Their sleek design enhances the quiet, peaceful atmosphere of the night, with the warm yellow light adding a touch of coziness to the cool evening air.



**POSITANO** 600



“We aimed to create designs that are both simple and versatile—something that can easily adapt to any space while still making a statement. It’s been exciting to see our creations used in so many projects, transforming environments in ways we’ve always hoped for.”

— Oliver Königs, Chief Designer

“At NEKO, we believe that great design knows no borders. Our products are designed to bring quality and innovation to any space, and it’s rewarding to see them being embraced in projects worldwide. I’m proud of what we’ve achieved and excited about where these designs will go next.”

— Bruno Touzery, Managing Director, NEKO France

### Partnerschaft/Partnership

#### Headquarters

**Switzerland**  
 NEKO Lighting AG  
 Kreuzstrasse 2, CH-8008, Zürich, Switzerland  
 T +41 44 451 8015  
 sales@nekolighting.com  
 https://nekolighting.com/de/

#### Factory

**China**  
 NEKO Lighting Ltd.  
 Nairui Technology Park, No. 5 Weideng Road  
 Maan Town, Huicheng District, Huizhou  
 Guangdong, 516000, China  
 T +86 752 2088 669  
 sales@nekolighting.com  
 https://nekolighting.com/

#### Office & Warehouse

**Germany**  
 NEKO Lighting GmbH  
 Kruppstrasse 47 (Office), 59227 Ahlen, Germany  
 Lange Reihe 170 (Warehouse), 59071 Hamm, Germany  
 T +49 2381 877 09 60  
 sales@nekolighting.de  
 https://nekolighting.com/de/

#### Office

**France**  
 NEKO Lighting  
 41, rue des Dames, 75017, Paris, France  
 T +33 1 44 50 20 30  
 sales@nekolighting.fr  
 https://nekolighting.com/fr/

**Switzerland**  
 NEKO Lighting AG  
 Rebstockstrasse 18  
 CH-6017, Ruswil  
 Switzerland  
 T +41 79 951 21 43  
 franz@nekolighting.com  
 https://nekolighting.com/

**UK**  
 NEKO Lighting  
 Unit 14E, Calderdale Business Park  
 Club Lane, Halifax, HX2 8DB, West Yorkshire, UK  
 T +0330 0571 888  
 hello@nekolightinguk.com  
 https://nekolighting.com/

**UAE (MENA)**  
 NEKO Lighting  
 GSHPO1 Hamsa Building  
 Karama, Dubai, UAE  
 T +97 1502426911  
 david@nekolighting.com  
 https://nekolighting.com/

**Saudi Arabia**  
 NEKO Lighting  
 Riyadh 11461, Saudi Arabia  
 silvio@nekolighting.com  
 https://nekolighting.com/

**Singapore**  
 NEKO Lighting  
 Singapore  
 sales@nekolighting.com  
 https://nekolighting.com/

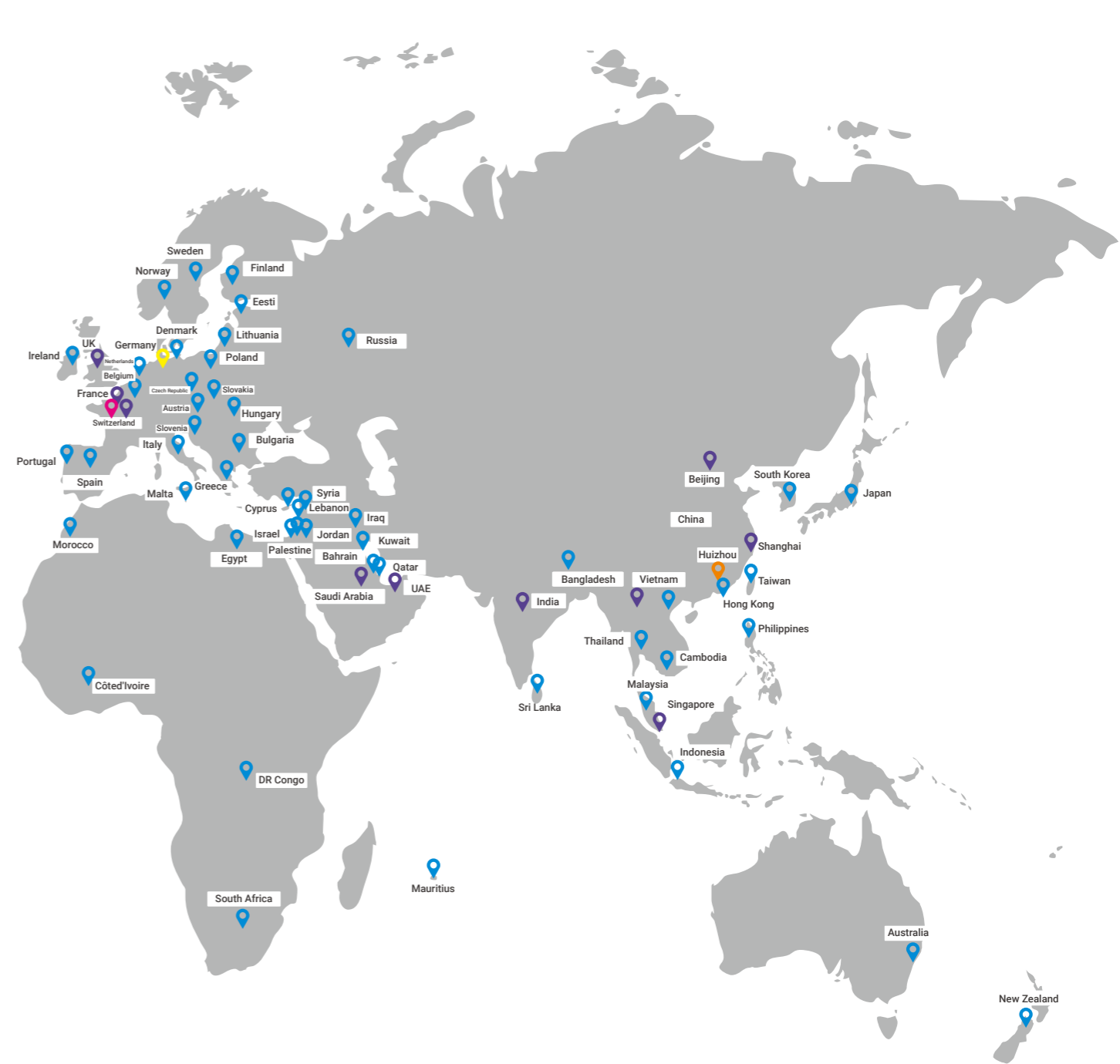


**India**  
 NEKO Lightings India Pvt Ltd  
 M no 901, A. P. Mordaree T. Haveli  
 Dist. Pune, 411025, India  
 T +91 7410700999  
 neko.india@nekolighting.in  
 https://nekolighting.com/

**Vietnam**  
 NEKO Lighting  
 Ho Chi Minh City, 700000  
 Ha Noi 100000, Vietnam  
 T +84 908854489  
 tan.pham@nekolighting.com  
 https://nekolighting.com/

**China**  
 NEKO Lighting  
 Room A712, Xinhua International Plaza  
 No.89 Dayangfang Road, Chaoyang District, Beijing, 100020, China  
 T +86 173 2681 1100  
 jonson@nekolighting.com  
 https://nekolighting.com/

**China**  
 NEKO Lighting  
 Room 309, 3rd Floor, Mong Kok Plaza  
 No.175 East Yan'an Road, Huangpu District, Shanghai, 200001, China  
 T +86 189 2602 8927  
 jonson@nekolighting.com  
 https://nekolighting.com/



- Headquarters
- Factory
- Office & Warehouse
- Office
- Distributor

